

HOOD INFORMATION - Job#1942161

HOOD NO.	TAG	MODEL	LENGTH	MAX. COOKING TEMP.	TOTAL EXH. CFM	EXHAUST PLENUM RISER(S)					TOTAL SUPPLY CFM	HOOD CONSTRUCTION	HOOD CONFIG.	
						WIDTH	LENG.	DIA.	CFM	S.P.			END TO END	ROW
1	HOOD #1	5424 ND-2-PSP-F	9' 6.00"	600 Deg.	2612		16'	2612	-1.324'		2220	430 SS Where Exposed	ALONE	ALONE
2	HOOD #2	5424 ND-2-PSP-F	10' 6.00"	600 Deg.	2520		16'	2520	-1.206'		2268	430 SS Where Exposed	ALONE	ALONE
3	HOOD #3	5424 ND-2-PSP-F	10' 0.00"	600 Deg.	2750		16'	2750	-1.468'		2200	430 SS Where Exposed	ALONE	ALONE
4	DISH HOOD	4824 VHB-G	4' 0.00"	700 Deg.	600		12'	600	-0.066'		0	304 SS 100%	ALONE	ALONE

HOOD OPTIONS

HOOD NO.	TAG	OPTION
1	HOOD #1	FIELD WRAPPER 18.00' High Front, Right BACKSPASH 80.00' High X 129.00' Long 430 SS LEFT END STANDOFF (FINISHED) 3' Wide 54' Long Insulated
2	HOOD #2	FIELD WRAPPER 18.00' High Front, Left, Right BACKSPASH 80.00' High X 129.00' Long 430 SS RIGHT END STANDOFF (FINISHED) 3' Wide 54' Long Insulated
3	HOOD #3	FIELD WRAPPER 18.00' High Front, Left, Right BACKSPASH 80.00' High X 120.00' Long 430 SS
4	DISH HOOD	FIELD WRAPPER 18.00' High Front, Right BACKSPASH 80.00' High X 48.00' Long 304 SS LEFT SIDESPLASH 80.00' High X 48.00' Long 304 SS

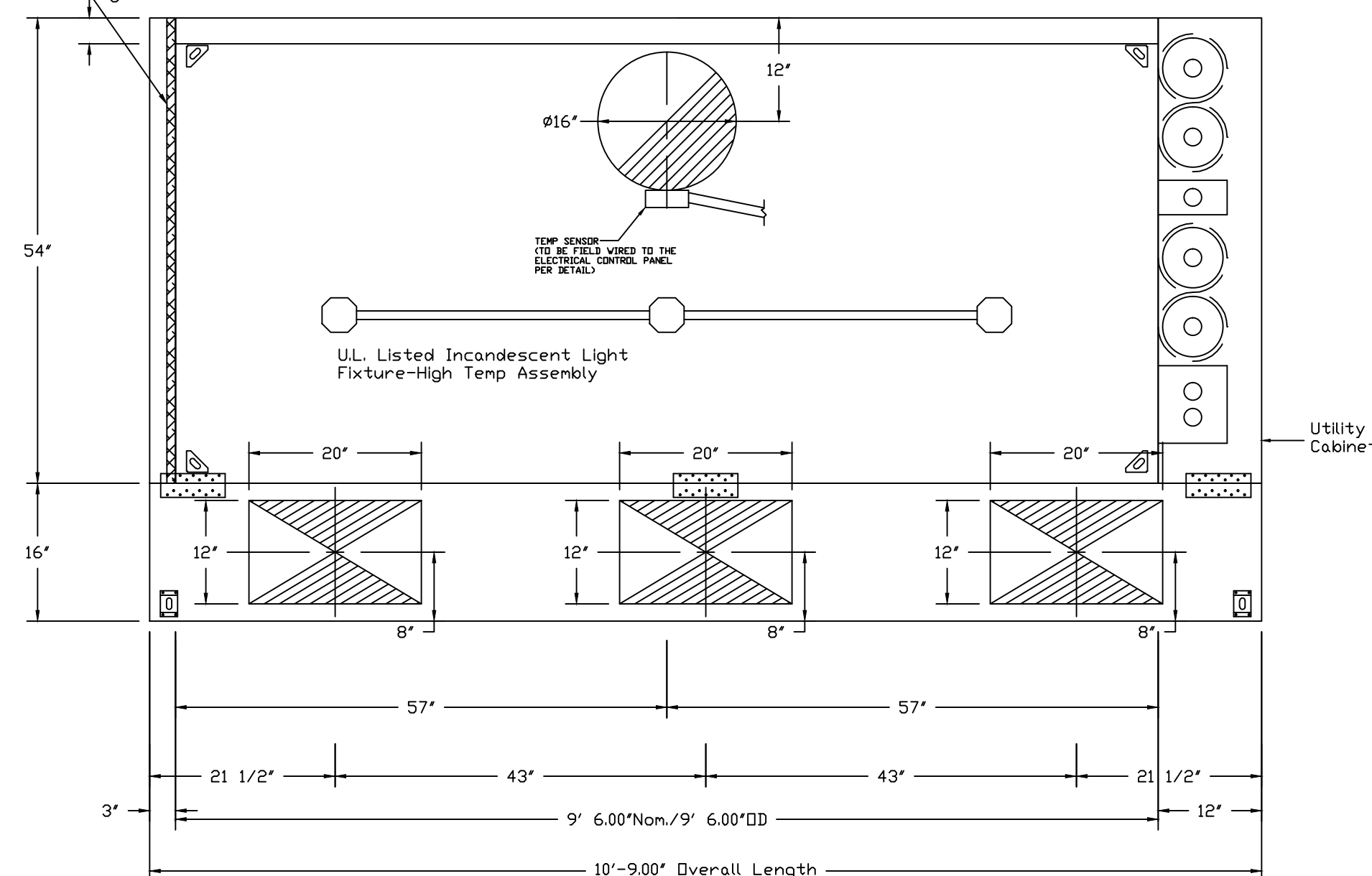
PERFORATED SUPPLY PLENUM(S)

HOOD NO.	TAG	POS.	LENGTH	WIDTH	HEIGHT	TYPE	RISER(S)				
							WIDTH	LENG.	DIA.	CFM	S.P.
1	HOOD #1	Front	129'	16'	6'	MUA	12"	20"		740	0.288'
						MUA	12"	20"		740	0.288'
2	HOOD #2	Front	129'	16'	6'	MUA	12"	20"		756	0.300'
						MUA	12"	20"		756	0.300'
3	HOOD #3	Front	120'	16'	6'	MUA	12"	20"		733	0.283'
						MUA	12"	20"		733	0.283'

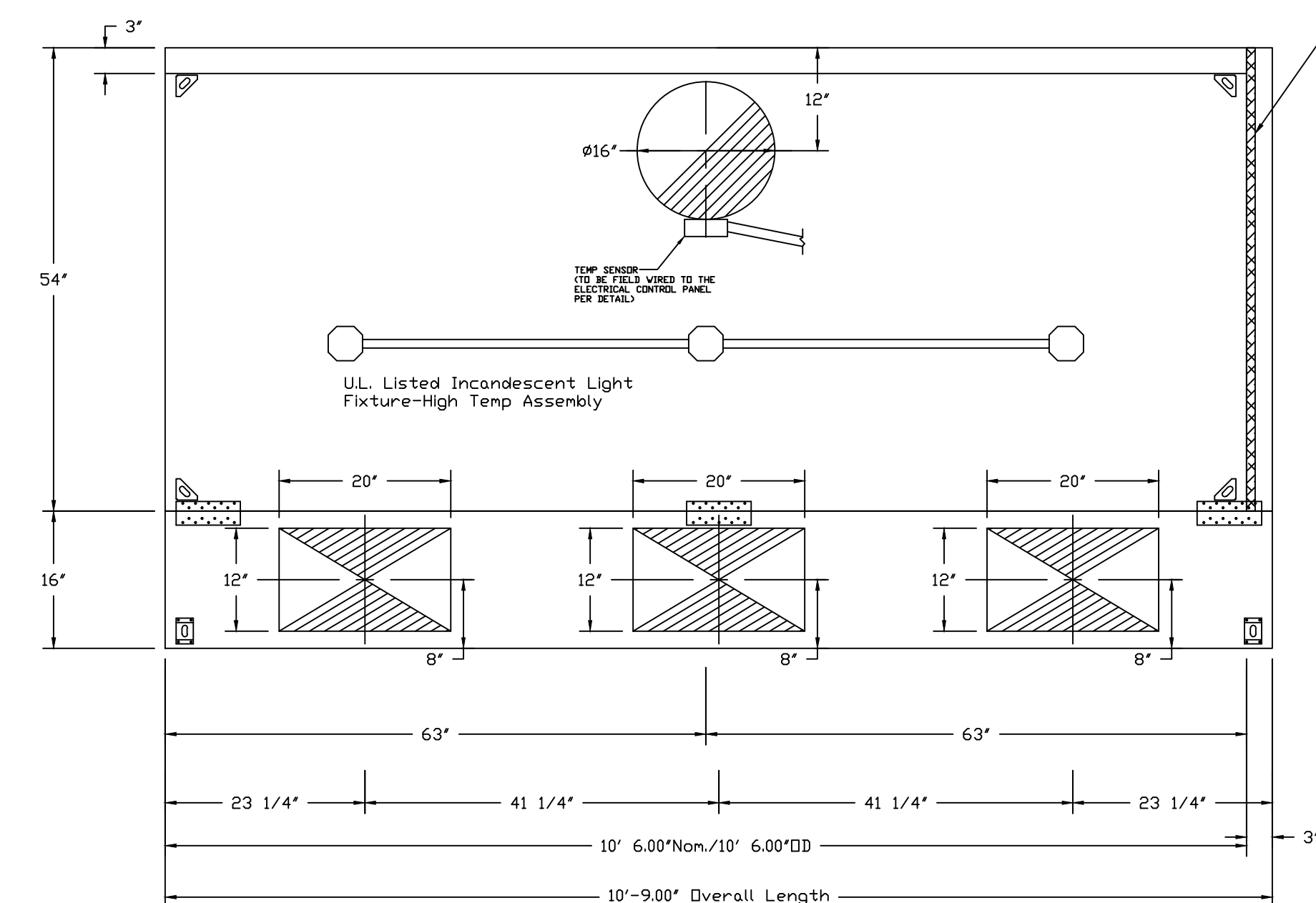
HOOD INFORMATION

HOOD NO.	TAG	FILTER(S)			LIGHT(S)			UTILITY CABINET(S)				FIRE SYSTEM PIPING	HOOD HANGING WGT	
		TYPE	QTY.	HEIGHT	LENGTH	QTY.	TYPE	WIRE GUARD	LOCATION	FIRE SYSTEM TYPE	SIZE			ELECTRICAL MODEL #
1	HOOD #1	Captrate Solo Filter	4	16"	20"	3	Incandescent	NO	Right	Ansul R102	3.0/3.0/3.0/3.0		YES	684 LBS
2	HOOD #2	Captrate Solo Filter	3	16"	20"	3	Incandescent	NO					YES	598 LBS
3	HOOD #3	Captrate Solo Filter	4	16"	16"	3	Incandescent	NO					YES	557 LBS
4	DISH HOOD					0							NO	177 LBS

1" LAYER OF INSULATION FACTORY INSTALLED IN 3.00" END STANDOFF MEETS 0" REQUIREMENTS CLEARANCE TO COMBUSTIBLE SURFACES.

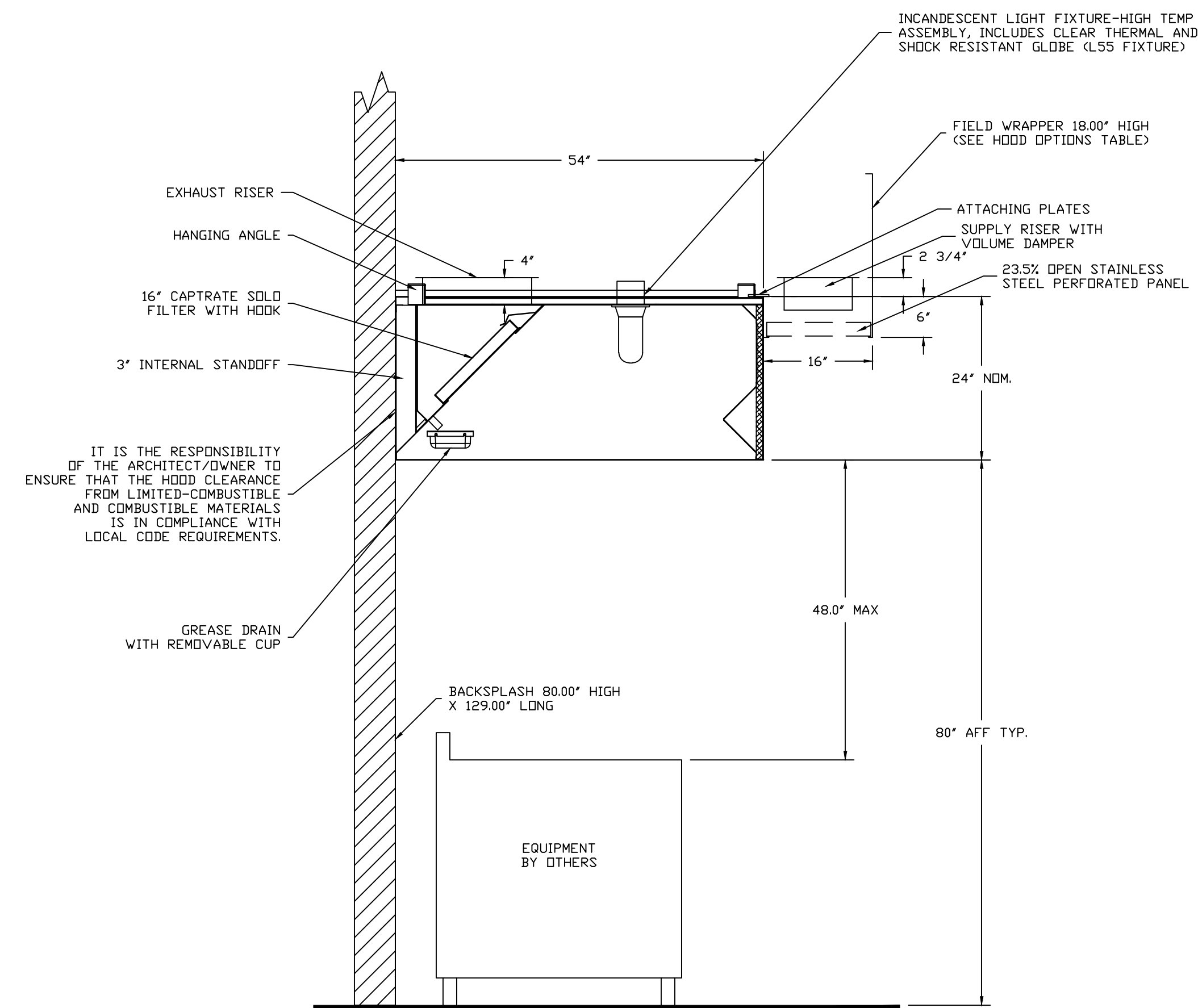


PLAN VIEW - Hood #1 (HOOD #1)
9' 6.00" LONG 5424ND-2-PSP-F

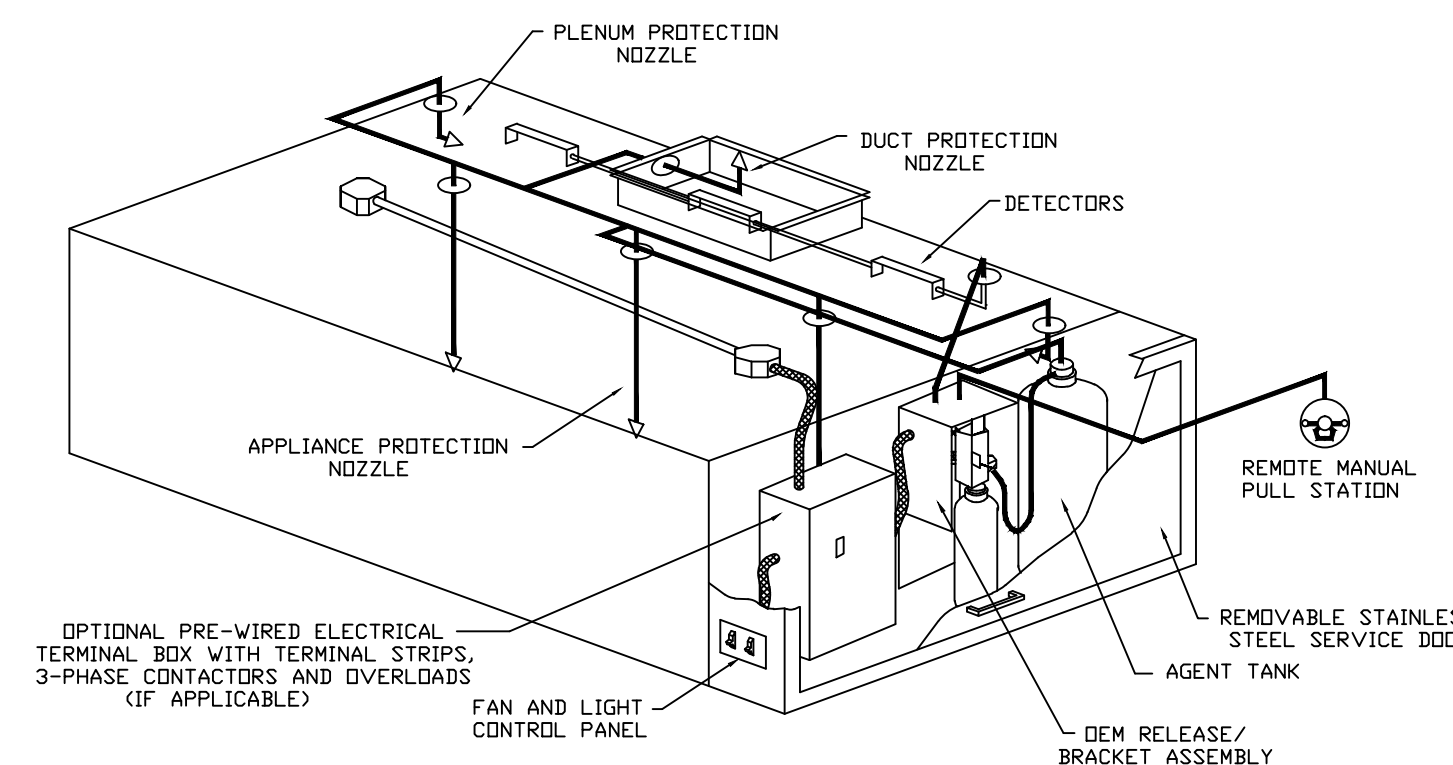


PLAN VIEW - Hood #2 (HOOD #2)
10' 6.00" LONG 5424ND-2-PSP-F

1" LAYER OF INSULATION FACTORY INSTALLED IN 3.00" END STANDOFF MEETS 0" REQUIREMENTS CLEARANCE TO COMBUSTIBLE SURFACES.

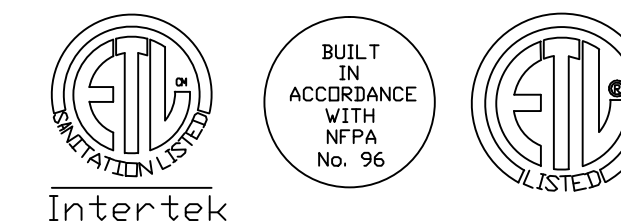


SECTION VIEW - MODEL 5424ND-2-PSP-F
HOODS - #1 (HOOD #1), #2 (HOOD #2)



TYPICAL ANSUL R-102 SYSTEM LAYOUT

CAPTIVE-AIRE HOODS ARE BUILT IN COMPLIANCE WITH



NFPA #96
UL 710 & ULC710 STANDARDS
E.T.L. LISTED 3054804-001

FOR QUESTIONS OR FURTHER INFORMATION, CONTACT STEVE LUDDY AT (800) 825-3143

REVISIONS

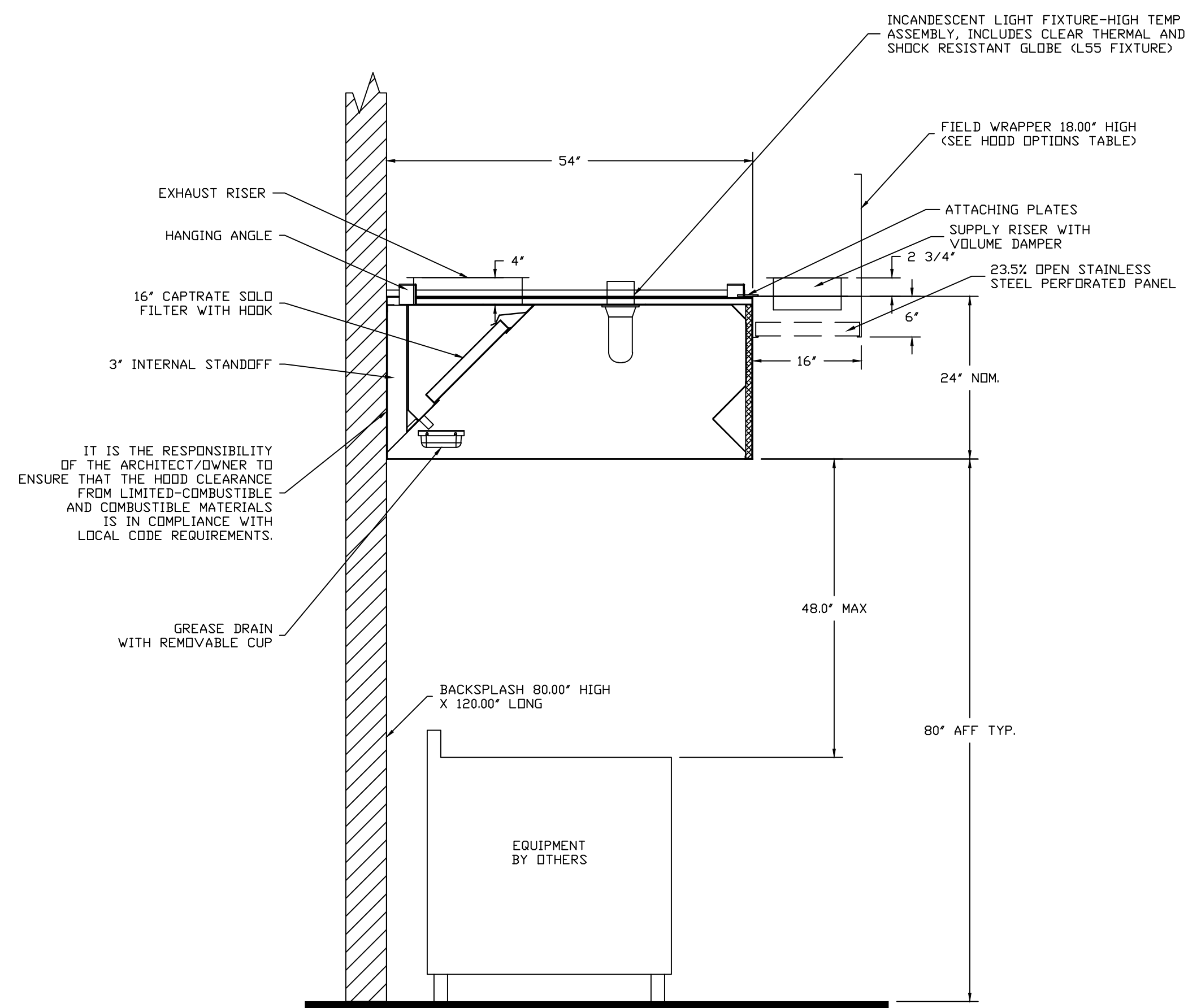
NO.	DESCRIPTION	DATE

Florida National Accounts
940 Centre Circle, STE. 3000, Altamonte Springs, FL 32714 PHONE: (407) 682-3100 FAX: (407) 682-3820 EMAIL: reg@caplive.com

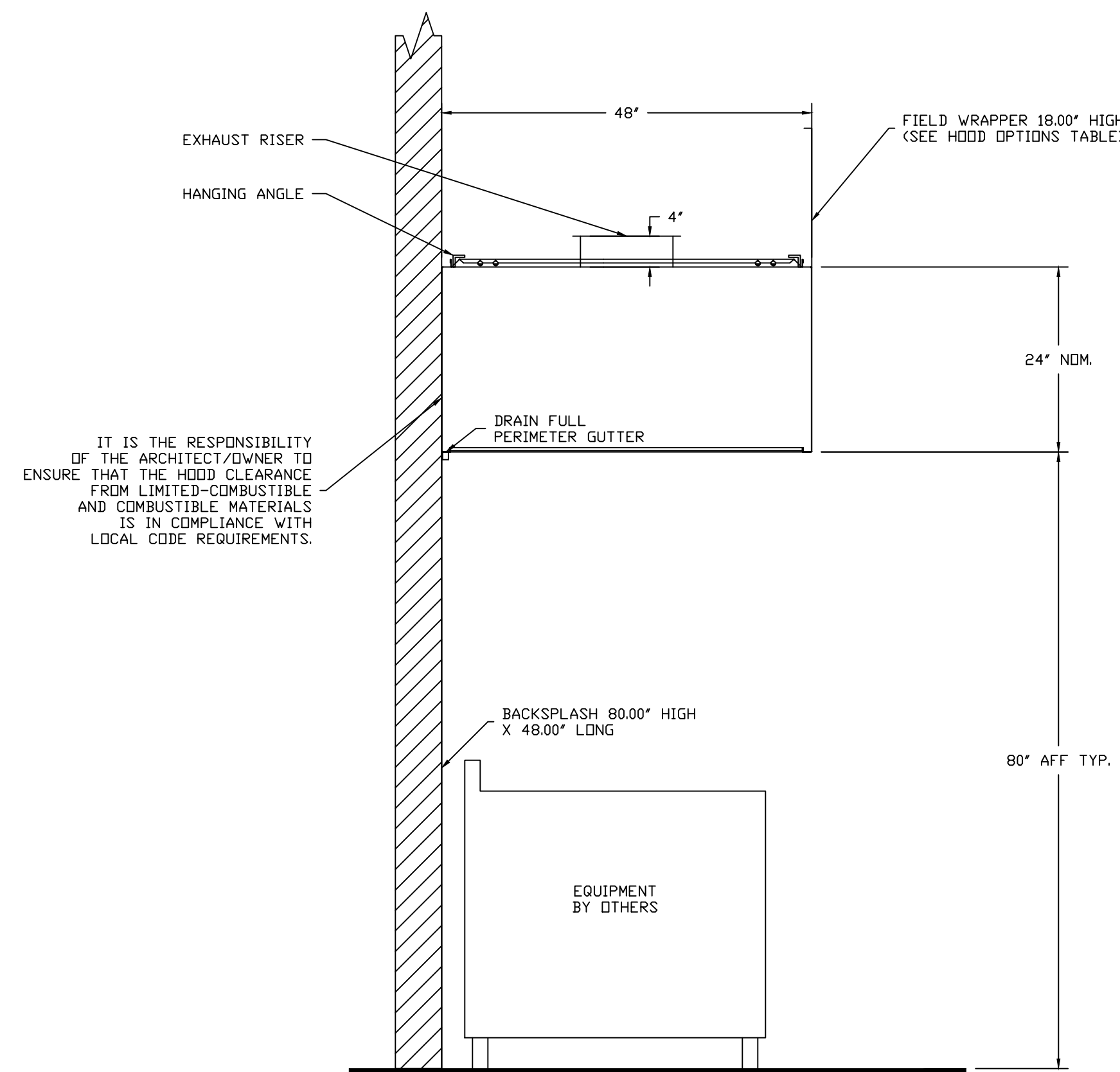
AMAIZE

DATE: 02-13-2014
DWG.#: 1942161
DRAWN BY: JSL
SCALE: 3/4" = 1'-0"
MASTER DRAWING

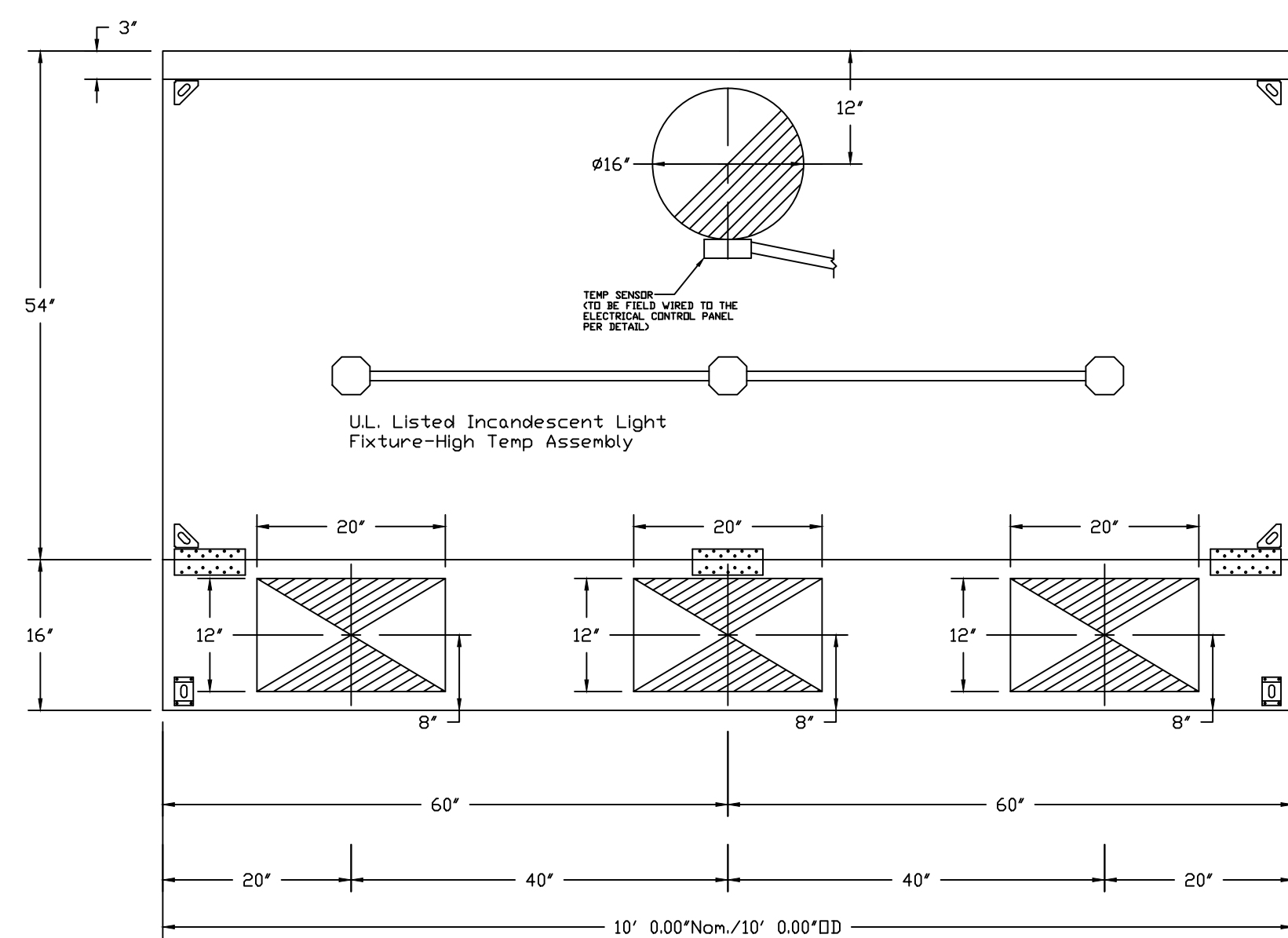
SHEET NO. 1



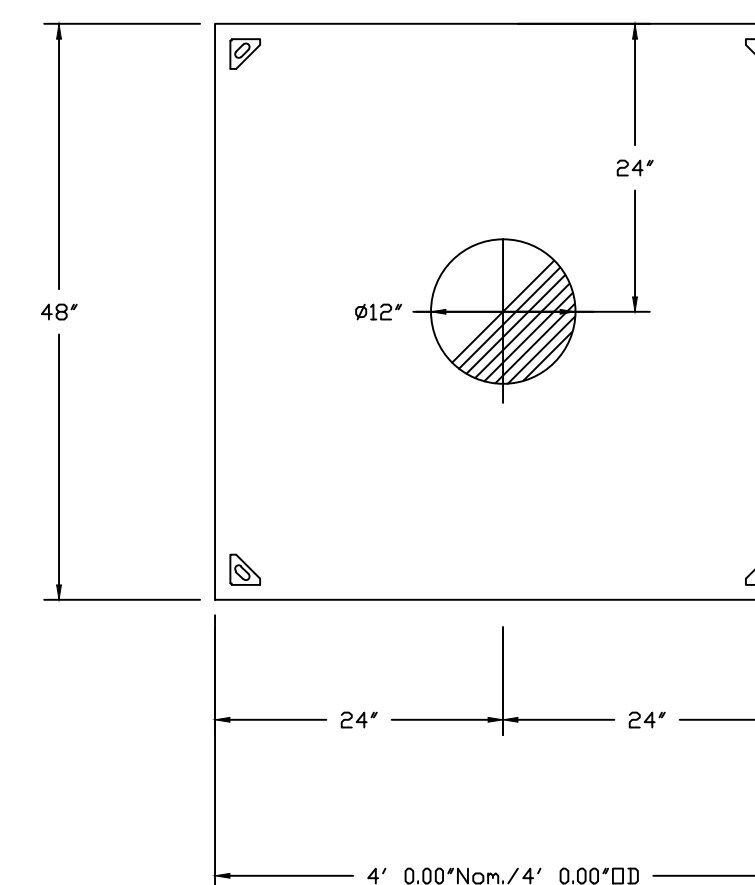
SECTION VIEW - MODEL 5424ND-2-PSP-F
HOOD - #3 (HOOD #3)



SECTION VIEW - MODEL 4824VHB-G
HOOD - #4 (DISH HOOD)



PLAN VIEW - Hood #3 (HOOD #3)
10' 0.00\"/>



PLAN VIEW - Hood #4 (DISH HOOD)
4' 0.00\"/>

REVISIONS	
DESCRIPTION	DATE

Florida National Accounts
 940 Centre Circle, STE. 3000, Altamonte Springs, FL 32714 PHONE: (407) 682-3100 FAX: (407) 682-3820 EMAIL: reg@00@captive.com
 www.captive.com

AMAIZE
 DATE: 02-13-2014
 DWG.#: 1942161
 DRAWN BY: JSL
 SCALE: 3/4" = 1'-0"
 MASTER DRAWING
 SHEET NO. 2

EXHAUST FAN INFORMATION - Job#1942161

FAN UNIT NO.	TAG	FAN UNIT MODEL #	CFM	ESP.	RPM	H.P.	Ø	VOLT	FLA	DISCHARGE VELOCITY	WEIGHT (LBS.)	SDNES
1	EF-1	CASRE18BD	2612	1.750	1335	2.000	3	460	3.0	1515 FPM	254	19.3
2	EF-2	CASRE18BD	2520	1.750	1315	2.000	3	460	3.0	1515 FPM	254	18.7
3	EF-3	CASRE18BD	2750	1.750	1366	2.000	3	460	3.0	1515 FPM	254	21
4	EF-DISH	DU33HFA	600	1.000	1546	0.333	1	115	4.1		63	11

MUA FAN INFORMATION - Job#1942161

FAN UNIT NO.	TAG	FAN UNIT MODEL #	BLOWER	HOUSING	CFM	ESP.	RPM	H.P.	Ø	VOLT	FLA	COOLING COIL ENTERING DB TEMP.	COOLING COIL ENTERING WB TEMP.	COOLING COIL LEAVING DB TEMP.	COOLING COIL LEAVING WB TEMP.	COOLING COIL TOTAL CAPACITY	COOLING COIL SENSIBLE CAPACITY	COOLING COIL LATENT CAPACITY	WEIGHT (LBS.)	SDNES
5	MUA-1	A3-G18-MPU	G18-PB	A3	6688	0.500	606	3.000	3	460	4.7	92.0°F	77.0°F	76.0°F	70.0°F	185.0 MBH	112.6 MBH	72.4 MBH	2050	16.6

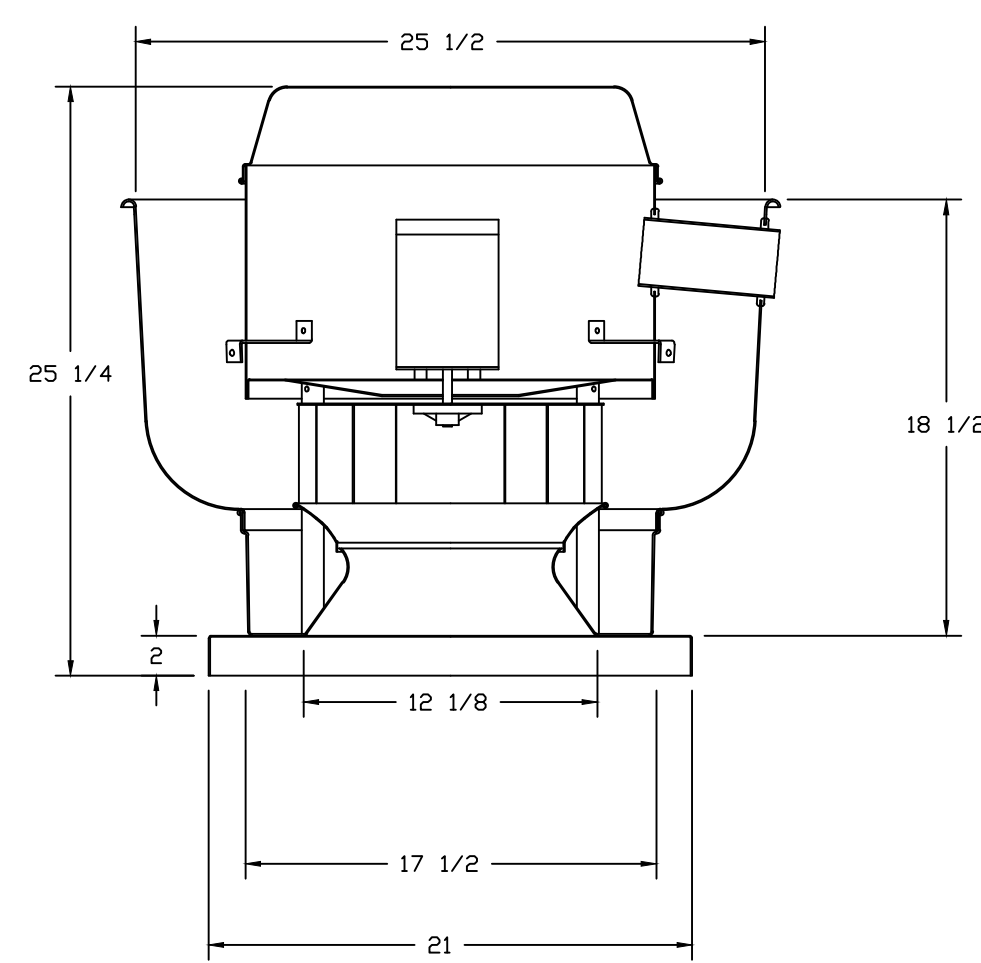
CONDENSER DETAILS

FAN UNIT NO.	TAG	FAN UNIT MODEL #	CONDENSER NO.	TONNAGE	VOLTAGE	PHASE	FREQUENCY	MCA	RLA	MAX. FUSE SIZE	MIN. WIRE SIZE
5	MUA-1	A3-G18-MPU	1	5	460	3 PHASE	60 Hz	10.5 Amps	8.5 Amps	15 Amps	14 AWG
			2	5	460	3 PHASE	60 Hz	10.5 Amps	8.5 Amps	15 Amps	14 AWG
			3	5	460	3 PHASE	60 Hz	10.5 Amps	8.5 Amps	15 Amps	14 AWG

CURB ASSEMBLIES

NO.	ON FAN	WEIGHT	ITEM	SIZE
1	# 1	30 LBS	Curb	26.500"W x 26.500"L x 24.000"H Vented
2	# 2	30 LBS	Curb	26.500"W x 26.500"L x 24.000"H Vented
3	# 3	30 LBS	Curb	26.500"W x 26.500"L x 24.000"H Vented
4	# 4	27 LBS	Curb	19.500"W x 19.500"L x 20.000"H
5	# 5	30 LBS	Rail	6.000"W x 35.000"L x 20.000"H Along Width,
5	# 5	48 LBS	Curb	35.000"W x 35.000"L x 20.000"H
# 5			Rail	6.000"W x 35.000"L x 20.000"H Along Width,
# 5			Rail	6.000"W x 35.000"L x 20.000"H Along Width,

FAN #4 DU33HFA - EXHAUST FAN (EF-DISH)



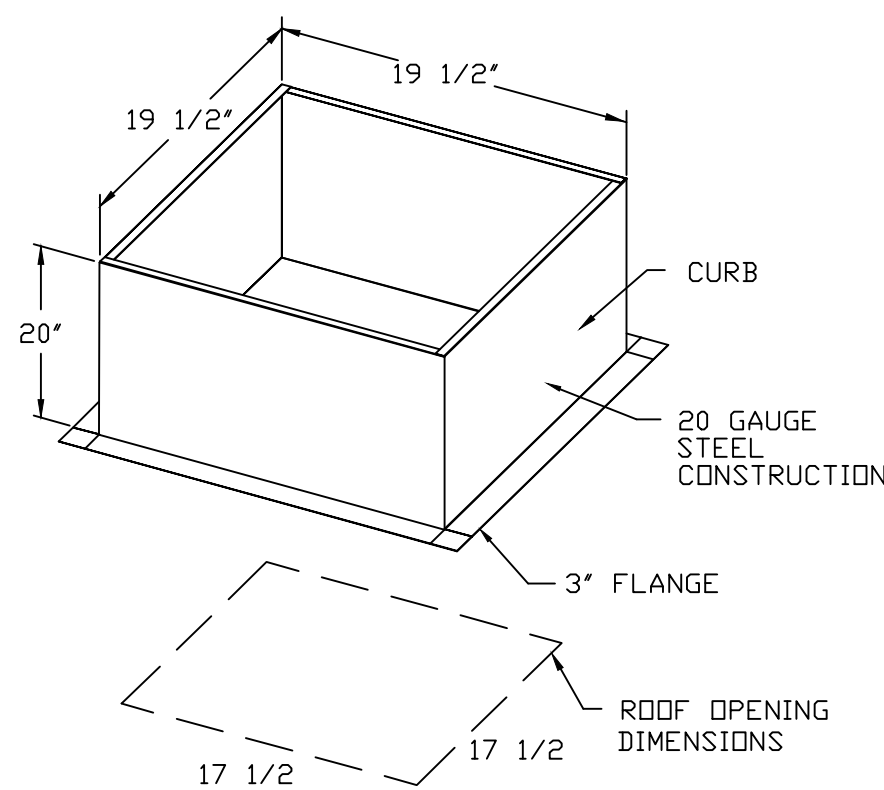
FEATURES:

- ROOF MOUNTED FANS
- RESTAURANT MODEL
- UL705 AND UL762
- VARIABLE SPEED CONTROL
- INTERNAL WIRING
- WEATHERPROOF DISCONNECT
- THERMAL OVERLOAD PROTECTION (SINGLE PHASE)
- HIGH HEAT OPERATION 300°F (149°C)
- GREASE CLASSIFICATION TESTING

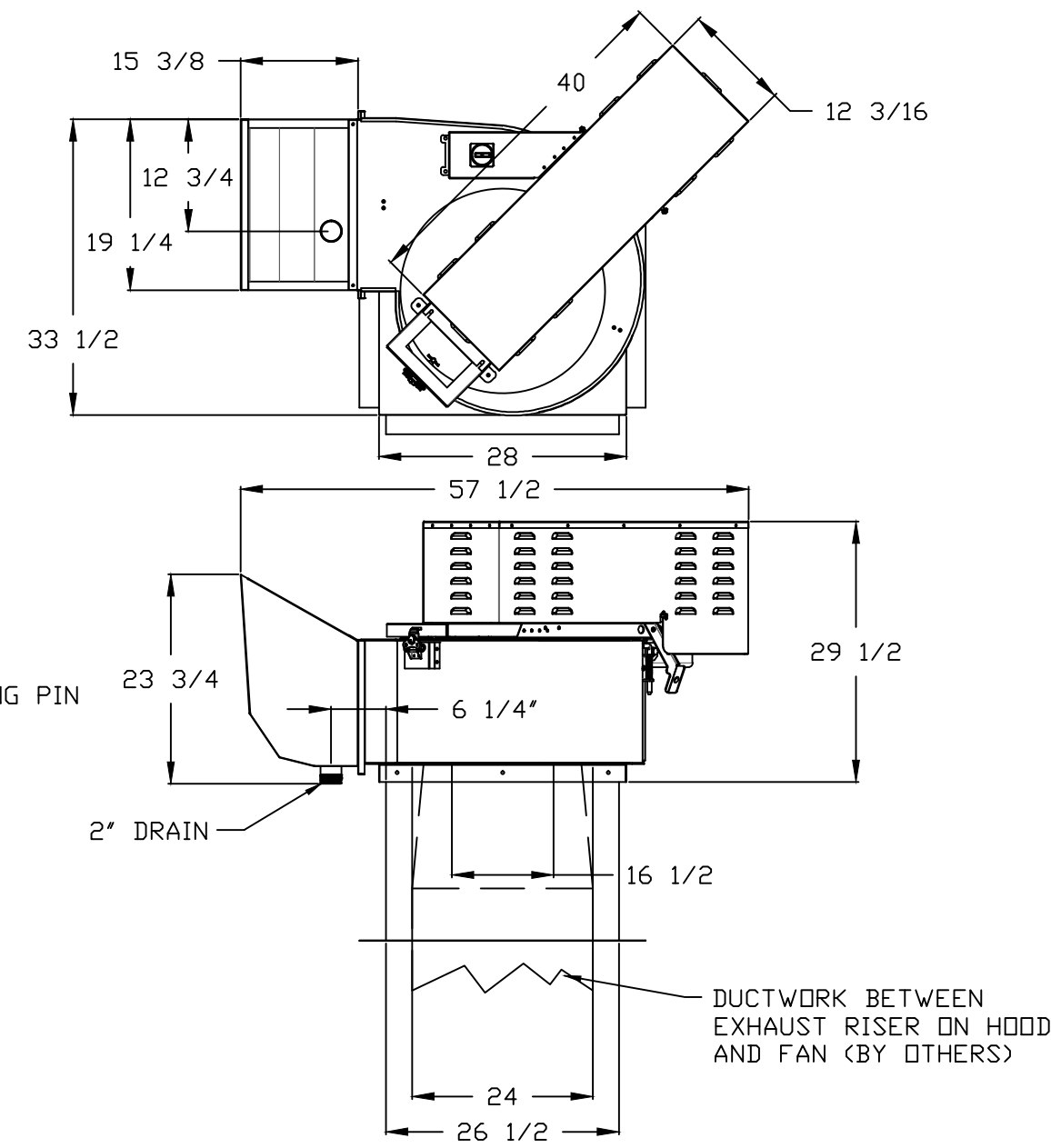
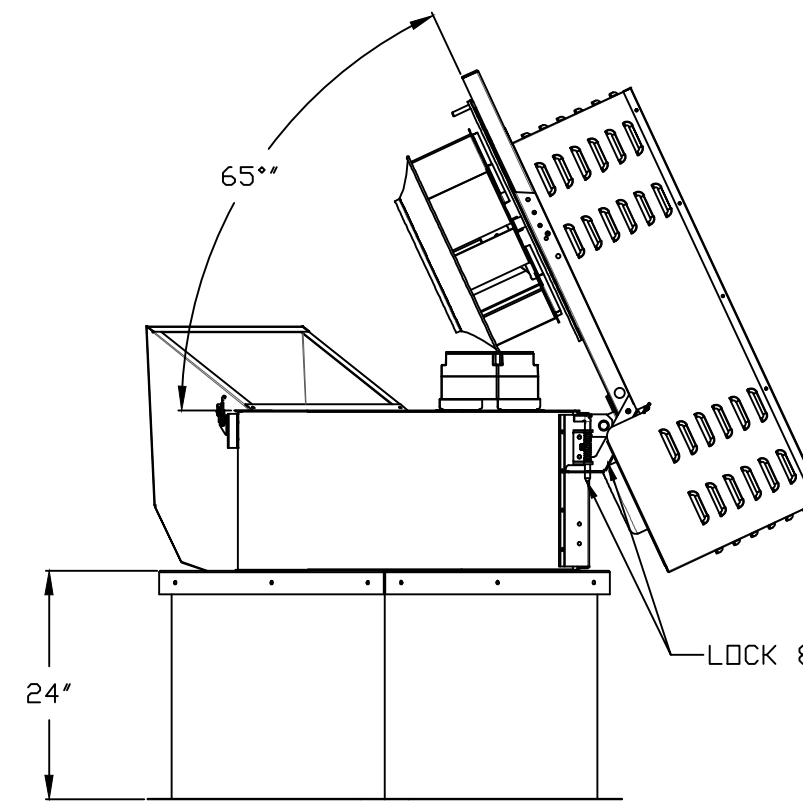
NORMAL TEMPERATURE TEST
EXHAUST FAN MUST OPERATE CONTINUOUSLY WHILE EXHAUSTING AIR AT 300°F (149°C) UNTIL ALL FAN PARTS HAVE REACHED THERMAL EQUILIBRIUM, AND WITHOUT ANY DETERIORATING EFFECTS TO THE FAN WHICH WOULD CAUSE UNSAFE OPERATION.

ABNORMAL FLARE-UP TEST
EXHAUST FAN MUST OPERATE CONTINUOUSLY WHILE EXHAUSTING BURNING GREASE VAPORS AT 600°F (316°C) FOR A PERIOD OF 15 MINUTES WITHOUT THE FAN BECOMING DAMAGED TO ANY EXTENT THAT COULD CAUSE AN UNSAFE CONDITION.

- OPTIONS**
- I 15-BDD DAMPER



FAN #1-3 CASRE18BD - EXHAUST FAN



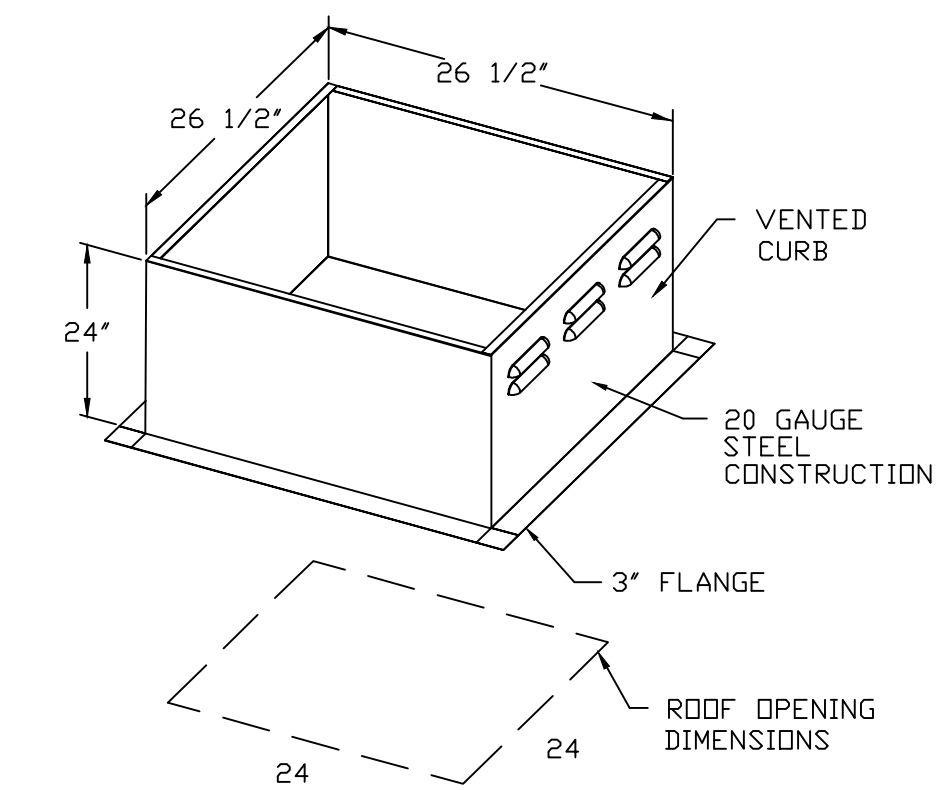
FEATURES:

- ROOF MOUNTED FANS
- RESTAURANT MODEL
- UL762
- HIGH HEAT OPERATION DIRECT DRIVE 300°F (149°C)
- HIGH HEAT OPERATION BELT DRIVE 500°F (260°C)
- HEAT SLINGER
- GREASE CLASSIFICATION TESTING
- TILT OUT WHEEL
- LOCKING PIN FOR POWER PACK
- MOTOR WEATHER COVER
- INTERLOCKED DISCONNECT SWITCH

NORMAL TEMPERATURE TEST BELT DRIVE
EXHAUST FAN MUST OPERATE CONTINUOUSLY WHILE EXHAUSTING AIR AT 500°F (260°C) UNTIL ALL FAN PARTS HAVE REACHED THERMAL EQUILIBRIUM, AND WITHOUT ANY DETERIORATING EFFECTS TO THE FAN WHICH WOULD CAUSE UNSAFE OPERATION.

ABNORMAL FLARE-UP TEST BELT & DIRECT DRIVE
EXHAUST FAN MUST OPERATE CONTINUOUSLY WHILE EXHAUSTING BURNING GREASE VAPORS AT 600°F (316°C) FOR A PERIOD OF 15 MINUTES WITHOUT THE FAN BECOMING DAMAGED TO ANY EXTENT THAT COULD CAUSE AN UNSAFE CONDITION.

- OPTIONS**
- UTILITY SET GREASE CUP



REVISIONS

DESCRIPTION	DATE

CAPTIVE

Florida National Accounts
940 Centre Circle, STE. 3000, Altamonte Springs, FL 32714 PHONE: (407) 682-3100 FAX: (407) 682-3100
www.captiveusa.com

AMAIZE

DATE: 02-13-2014

DWG.#:
1942161

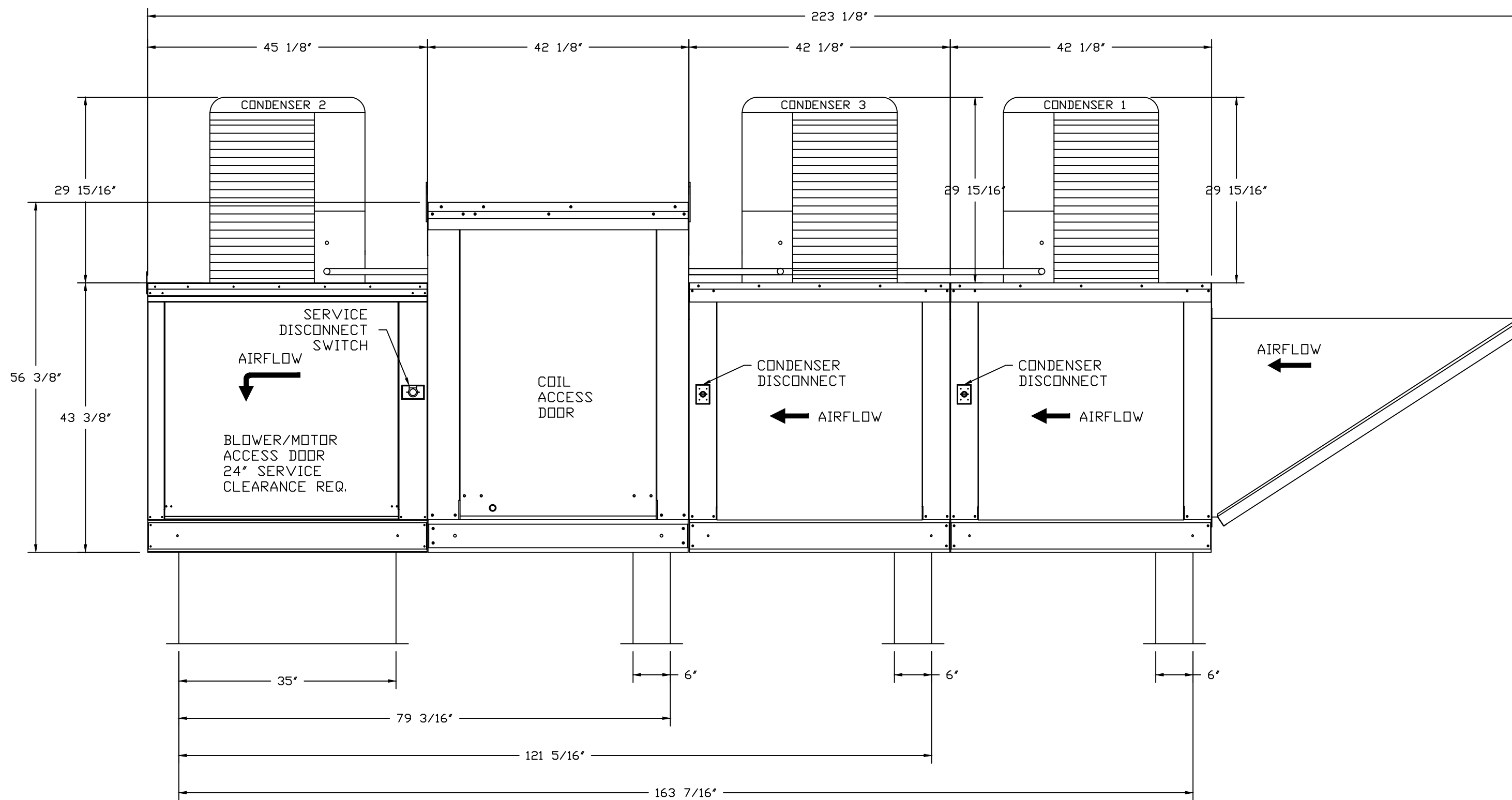
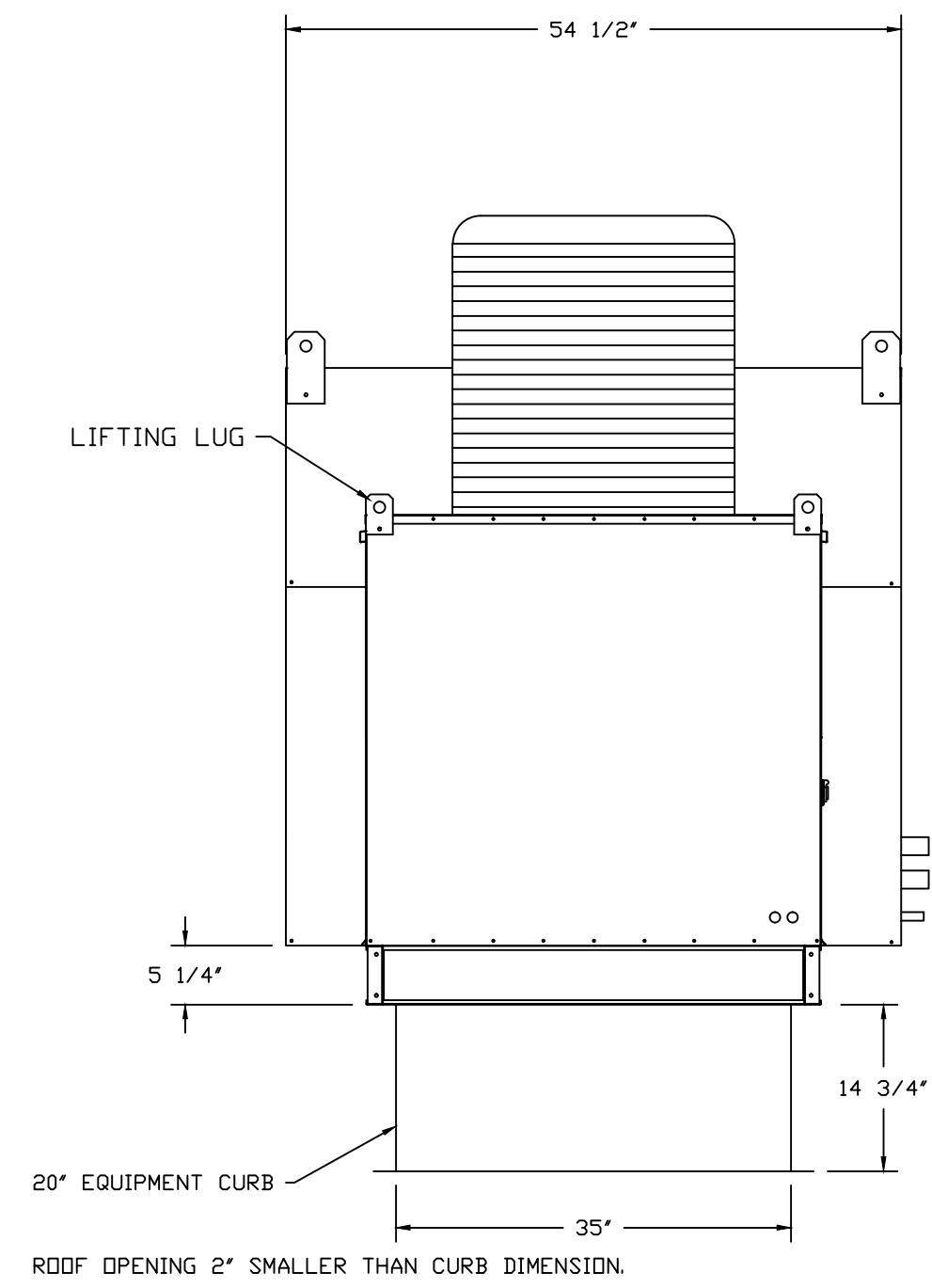
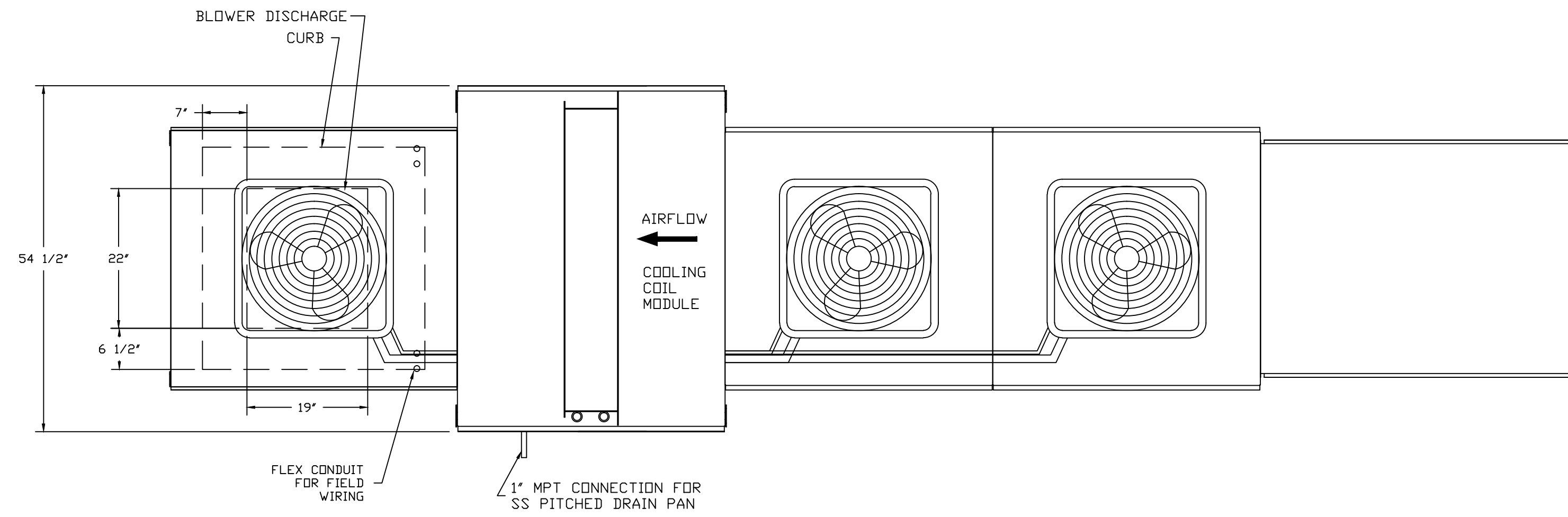
DRAWN BY: JSL

SCALE:
3/4" = 1'-0"

MASTER DRAWING

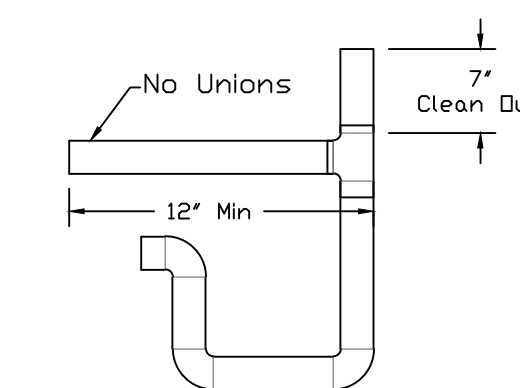
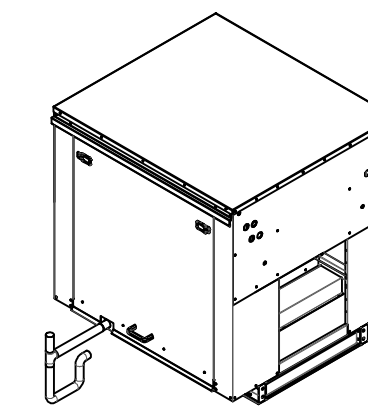
SHEET NO.
3

- FAN #5 A3-G18-MPU - SUPPLY FAN (MJA-1)
1. SUPPLY UNIT WITH 18" BLOWER IN SIZE #3 HOUSING
 2. INTAKE HOOD WITH EZ FILTERS
 3. DOWN DISCHARGE - AIR FLOW RIGHT -> LEFT
 4. 15 TON, 3 CIRCUIT (5/5/5) MODULAR PACKAGED COOLING OPTION FOR SIZE 3 MODULAR PACKAGED UNIT. INCLUDES CONDENSER, DX COIL, FILTER/DRYER KIT, HARD START KIT, THERMAL EXPANSION VALVE, R410A REFRIGERANT, AND REFRIGERANT PIPING. (5,400 TO 7,000 CFM) NOT BUILT WITH OPPOSITE SIDE CONTROLS OR OPPOSITE AIRFLOW DIRECTION. CONDENSERS REQUIRE SEPARATE 460V, 3 PHASE POWER SUPPLY. COIL = 3E21002B
 5. FULL GRATING FOR UNTEMPERED FANS FOR SHIPPING
 6. INSULATED BLOWER HOUSING SIZE 3 COMMERCIAL MODULAR
 7. CONTROL PACKAGE FOR MOD PACKAGE UNIT COOLING ONLY UNIT. INCLUDES AIRFLOW PROVING SWITCH, 2 STAGE THERMOSTAT AND TERMINAL BLOCKS.
 8. SUPPORT SHELL FOR SIZE 3 MODULAR PACKAGE UNIT. INCLUDES CONTROL VESTIBULE. INCLUDES CONDENSER SUPPORTS. DOES NOT INCLUDE RETURN AIR OR INLET AIR DAMPER.
 9. SUPPORT SHELL FOR SIZE 3 MODULAR PACKAGE UNIT FOR THIRD CONDENSER. INCLUDES CONTROL VESTIBULE. INCLUDES CONDENSER SUPPORTS. DOES NOT INCLUDE RETURN AIR OR INLET AIR DAMPER.



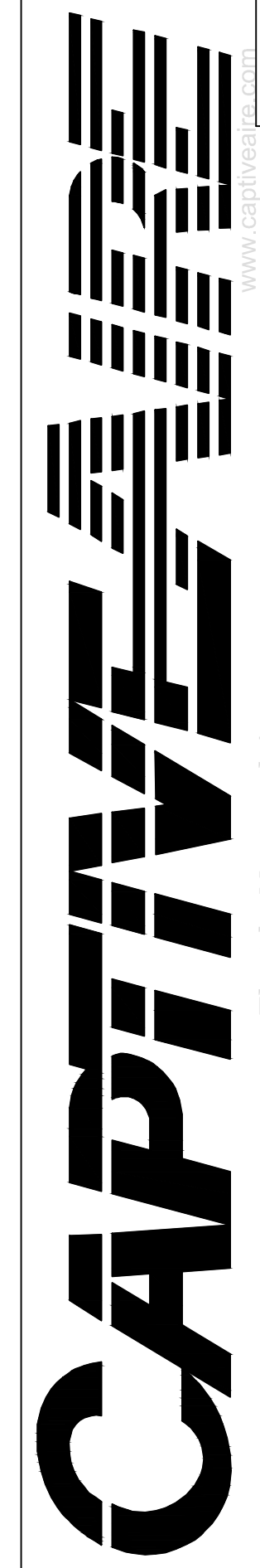
Typical Drain Trap Install

Recommended Cooling Coil Drain Trap Configuration



- Notes:
- 1) 1" diameter PVC Pipe only
 - 2) Use only low profile couplings
 - 3) Add clean out as shown

REVISIONS	
DESCRIPTION	DATE



Florida National Accounts
 940 Centre Circle, STE. 3000, Altamonte Springs, FL 32714 PHONE: (407) 682-3100 FAX: (407) 682-2820 EMAIL: reg@caplive.com
 www.caplive.com

AMAZE

DATE: 02-13-2014

DWG.#:
1942161

DRAWN BY: JSL

SCALE:
3/4" = 1'-0"

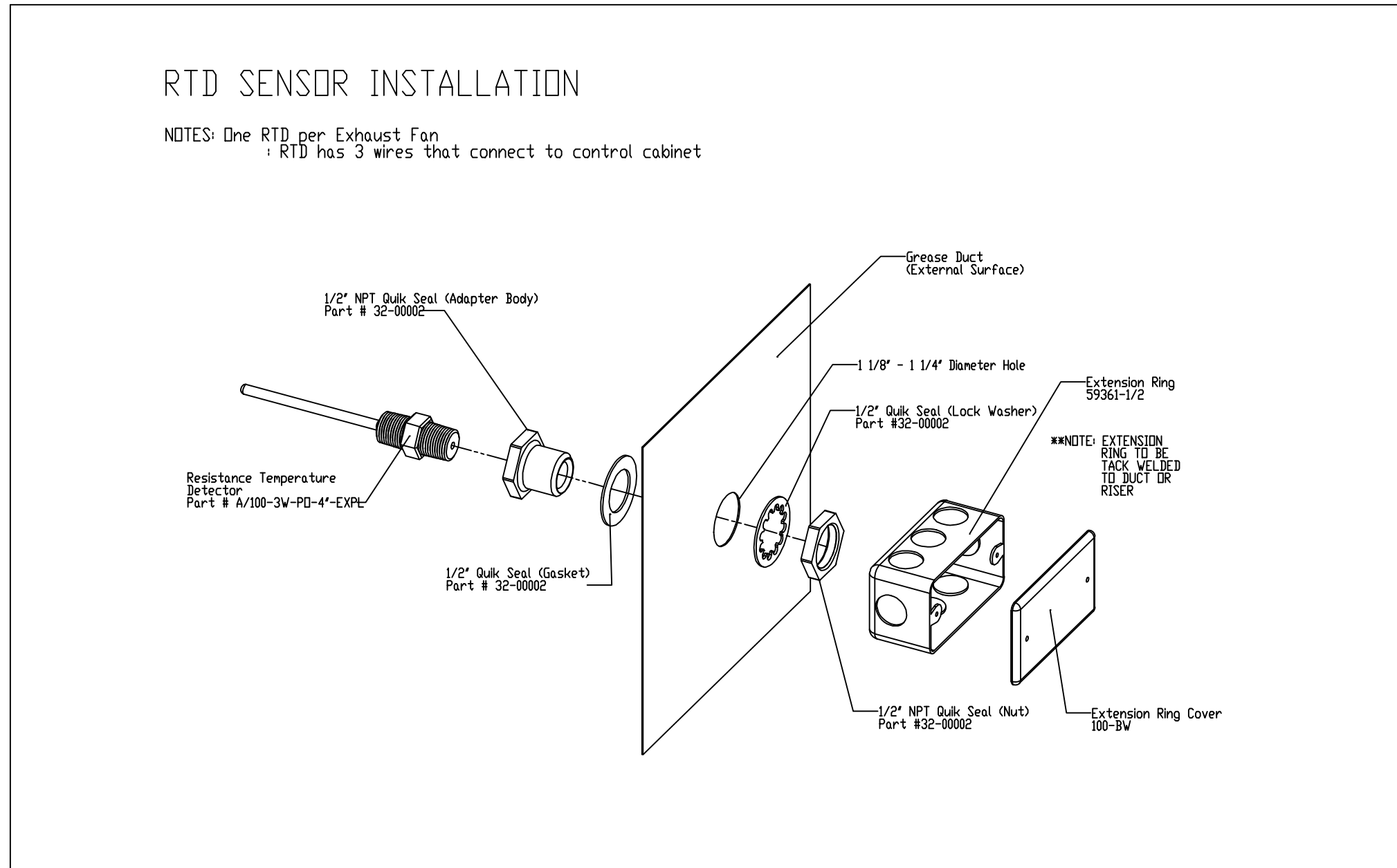
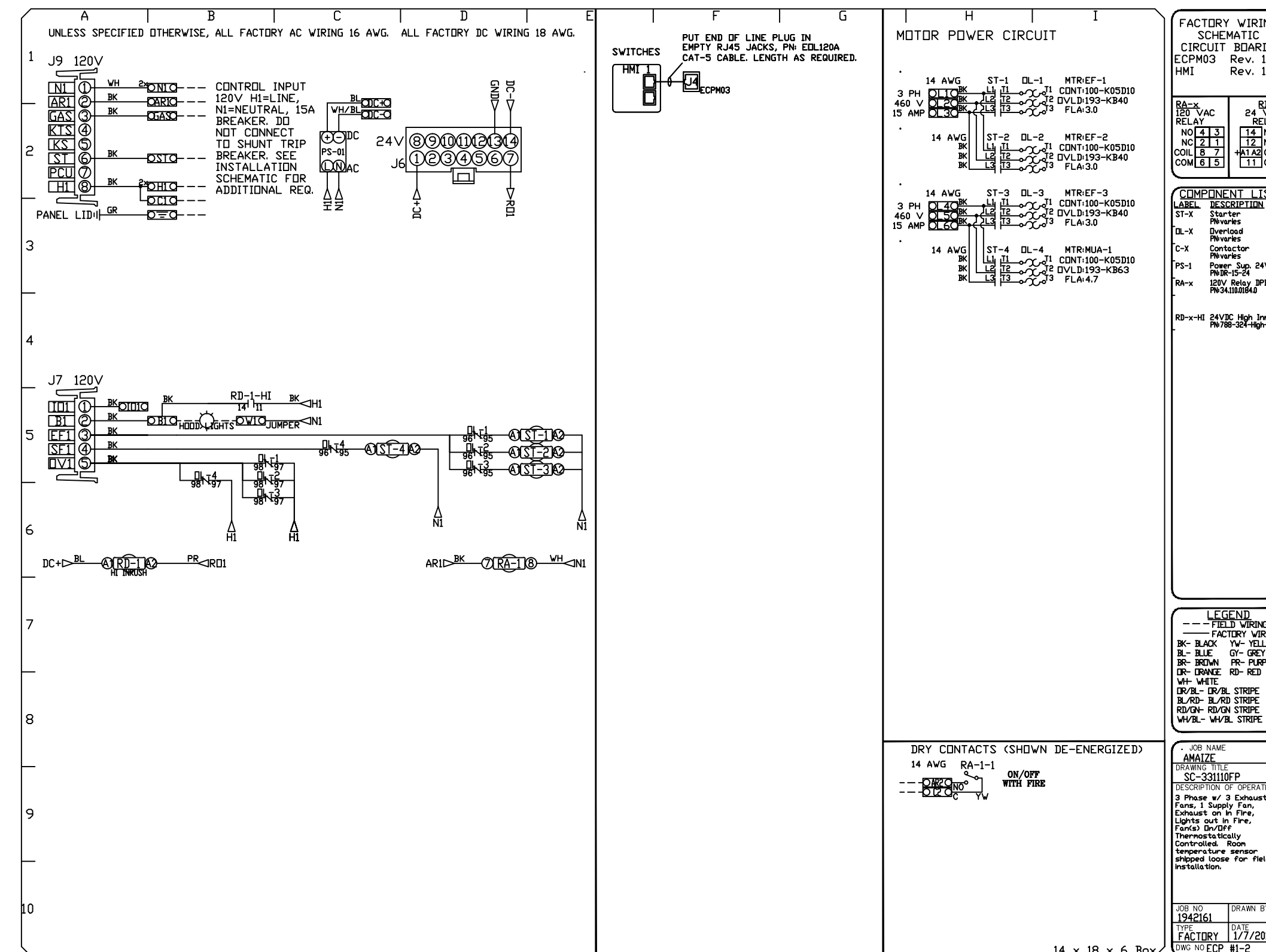
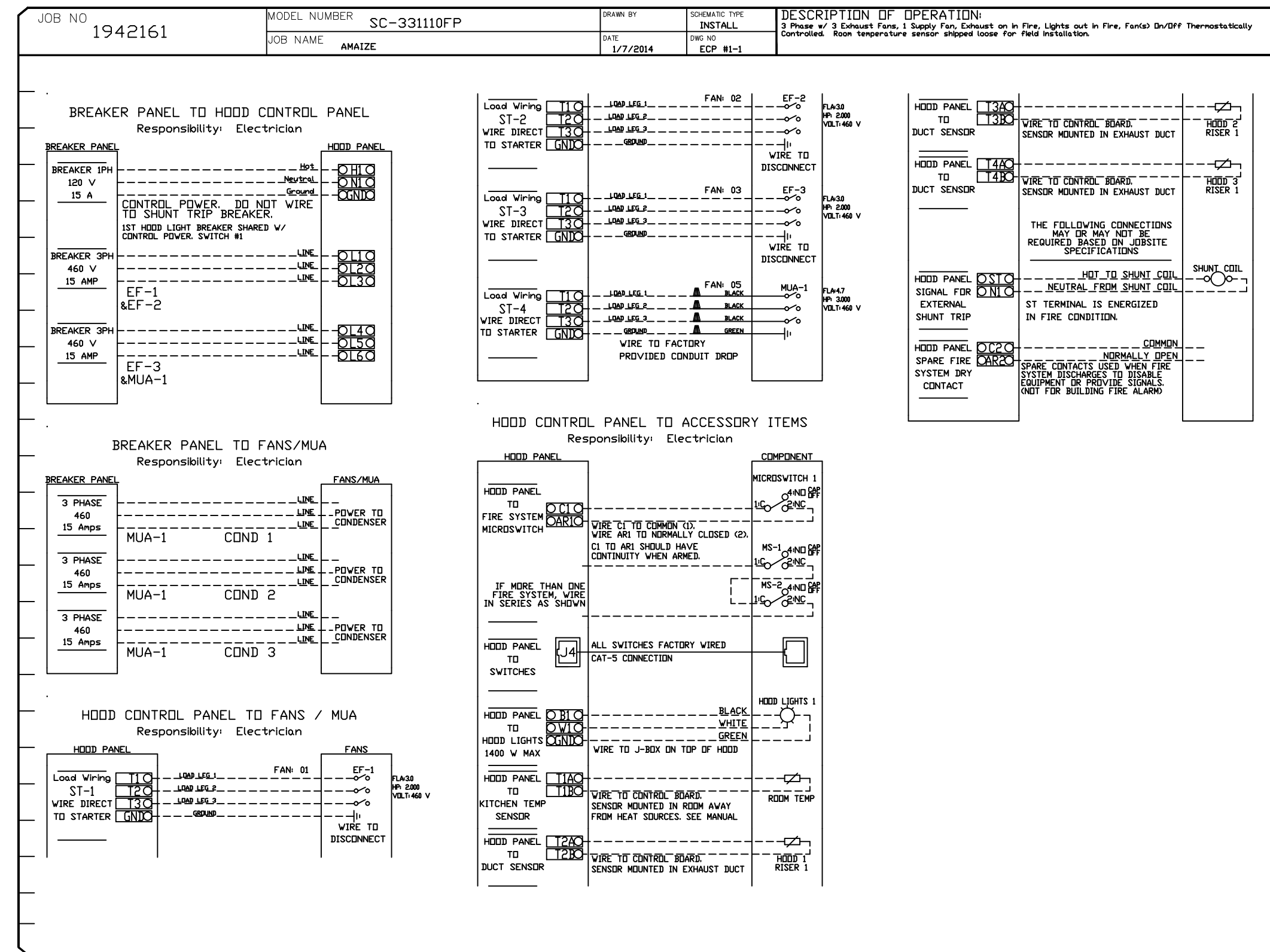
MASTER DRAWING

SHEET NO.
4

HOOD CONTROL PANEL

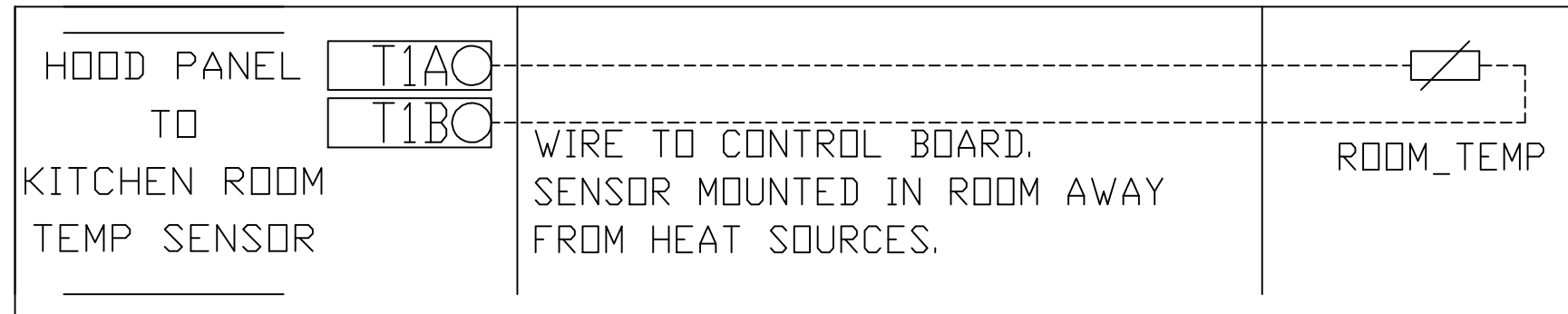
ELECTRICAL PACKAGES - Job#1942161

NO.	TAG	PACKAGE #	LOCATION	SWITCHES		OPTION	FANS CONTROLLED				
				LOCATION	QUANTITY		TYPE	Ø	H.P.	VOLT	FLA
1		SC-33110FP	Wall Mount In SS Box	SS Wall Mount Box	1 Light	Smart Controls Thermostatic Control	Exhaust	3	2.000	460	3.0
							Exhaust	3	2.000	460	3.0
							Exhaust	3	2.000	460	3.0
							Supply	3	3.000	460	4.7



ROOM TEMPERATURE SENSOR DETAIL

ROOM TEMPERATURE SENSOR SUPPLIED BY CAPTIVE AIRE TO BE INSTALLED BY ELECTRICAL CONTRACTOR



THE REMOTE TEMP SENSORS MOUNTED IN EACH EXHAUST DUCT COLLAR MUST BE FIELD WIRED BACK TO ELECTRICAL CONTROL PANEL BY THE ELECTRICIAN. (SEE DUCT STAT WIRING FOR FAN SWITCH DETAIL)

REVISIONS

NO.	DESCRIPTION	DATE
1		
2		
3		
4		

AMAZE

DATE: 02-13-2014

DWG.#: 1942161

DRAWN BY: JSL

SCALE: 3/4" = 1'-0"

MASTER DRAWING

SHEET NO. 5

CAPTIVE AIRE

Florida National Accounts

940 Centre Circle, STE. 3000, Altamonte Springs, FL 32714 PHONE: (407) 682-3100 FAX: (407) 682-3820 EMAIL: reg@00.captiveaire.com www.captiveaire.com