

streetsense.



amaiza.

THE AMAZING AREPA PLACE

ARCHITECTURAL PROTOTYPE PACKAGE

JANUARY 2014 UPDATE



I CONCEPT

II DESIGN

PLAN

RENDERINGS

ELEVATIONS

III SPECIFICATIONS

RESTROOM FIXTURES

LIGHTING SPECIFICATIONS

FURNITURE SPECIFICATIONS

FINISH + MATERIAL SPECIFICATIONS

IV ARCHITECTURAL DETAILS

CONTENTS



YELLOW

BM HC-4
HAWTHORNE YELLOW



YELLOW

SW6684
BRITTLEBRUSH



ORANGE

BM2009-10
REDSTONE



PURPLE

BM2070-20
AUTUMN PURPLE



GRAY

SW6075
GARRET GRAY



BEIGE

SW0044
HUBBARD SQUASH

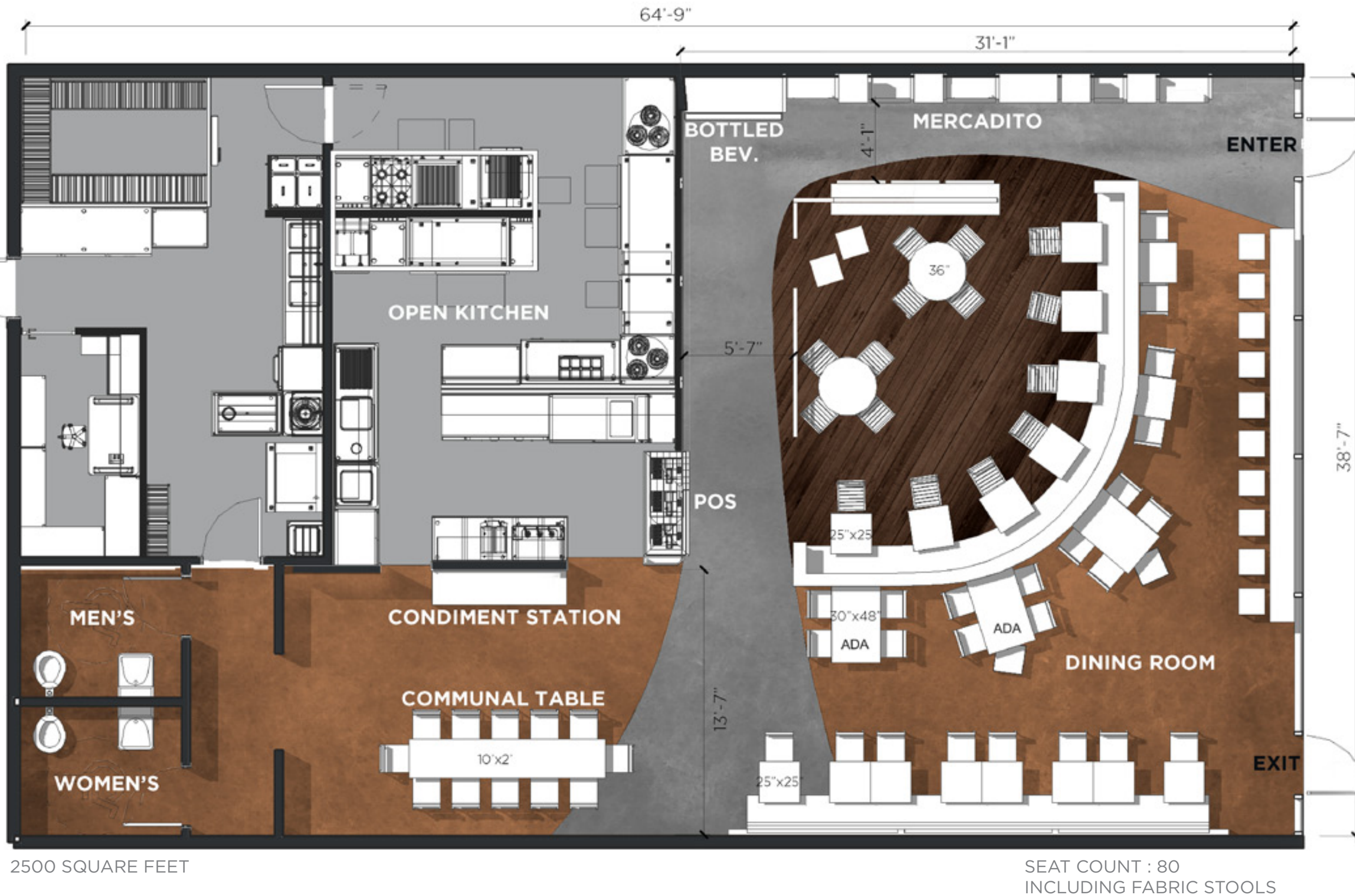
COLOR INSPIRATION



INTERIOR CONCEPT

DESIGN

NOTE: DRAWINGS ARE TO BE VIEWED AS DESIGN INTENT ONLY AND MAY NEED TO BE ALTERED DURING CONSTRUCTION DOCUMENTATION TO MEET CODE REQUIREMENTS PER LOCAL JURISDICTIONS. DRAWINGS MAY NOT BE TO SCALE AND ARE NOT INTENDED FOR CONSTRUCTION.



2500 SQUARE FEET

SEAT COUNT : 80
INCLUDING FABRIC STOOLS

FLOORING



EXPOSED CONCRETE



WOOD/ PORCELAIN WOOD



SHINY / MATTE

STAINED CONCRETE
OPTIONS

PLAN



INTERIOR: VIEW UPON ENTERING



INTERIOR: VIEW UPON ENTERING - CEILING OPTION 2

NOTE:
CEILING
OPTION
2 IS SHOWN



TEXTURED CONCRETE
PANELS ON MAIN WALLS



PAINTED WOOD SLATS



CORIAN COUNTERTOPS



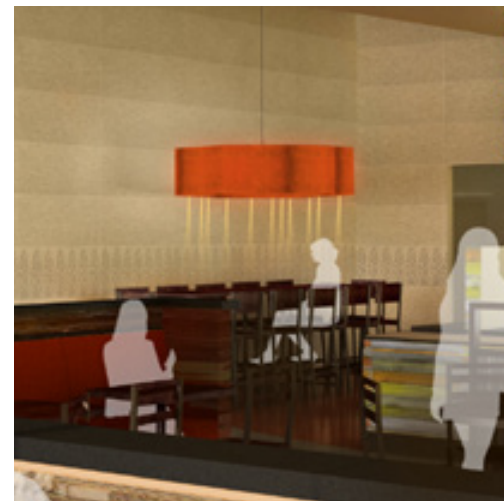
DIGITAL MENU BOARDS

ORDER COUNTER

NOTE:
CEILING
OPTION
2 IS SHOWN



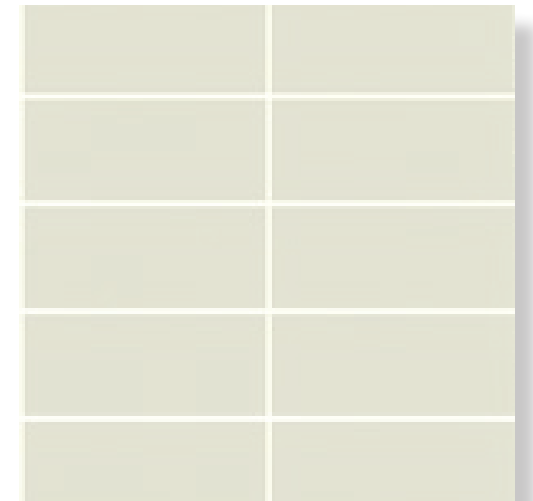
CORN STAMP ON
CONCRETE PANELS



FEATURE LIGHT ABOVE
COMMUNAL TABLE



CURVED WOOD
FEATURE WALL WITH
WHITE-WASHED LOGO



KITCHEN TILE
4"X8"

MAIN SEATING

NOTE:
CEILING
OPTION
2 IS SHOWN



PAINTED CURVED WOOD
SLATS



METAL FRAME WOOD
CHAIR



WOOD PLANK TABLE TOPS



STOOLS AT FRONT BAR



STAINED CONCRETE
FLOORS

MAIN SEATING

NOTE:
CEILING
OPTION
2 IS SHOWN

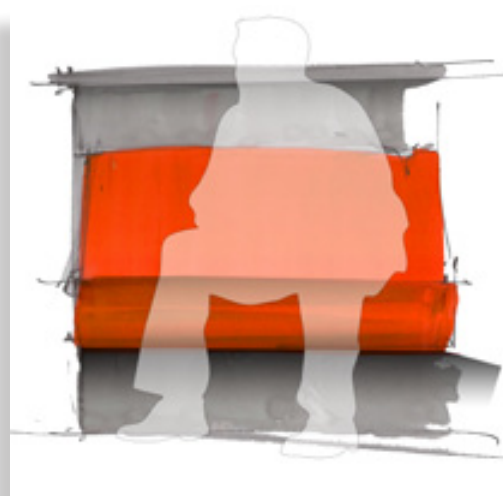


METAL FRAME WOOD
CHAIR



PAINTED CURVED WOOD
SLATS

BAR SKETCH



CURVED BANQUETTE SEATING



BLACK METAL CHAIRS



WOOD PLANK TABLE TOPS



FABRIC STOOLS



WOOD PLANK FLOORING

CENTRAL DINING



MERCADITO SHELVES



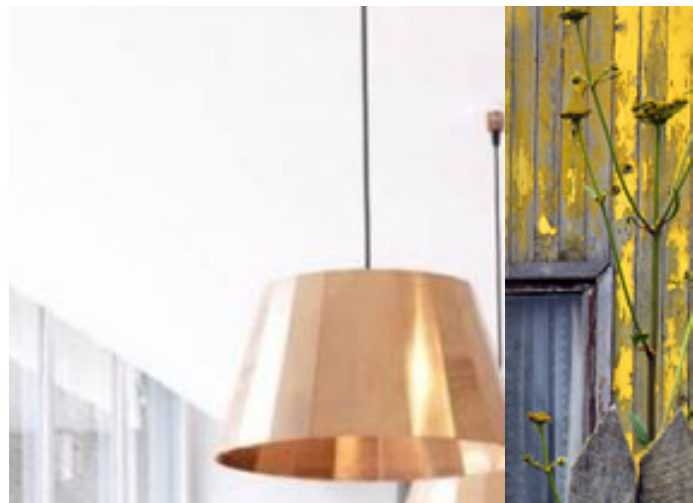
MOCHILAS FOR MERCHANDISE



TV MONITORS TO FEATURE VIDEO OF AREPAS MAKING

MERCADITO

GRAPHICS WALL OPTION 1



CUSTOM PAINTED WOOD-SLAT
LIGHT FIXTURES



CORN STAMP ON
CONCRETE PANELS



COMMUNAL TABLE
STOOLS



COMMUNAL TABLE



TEXTURE LIGHT CONCEPT

GRAPHICS WALL + COMMUNAL SEATING

GRAPHICS WALL OPTION 2



CUSTOM PAINTED WOOD-SLAT LIGHT FIXTURES



CORN STAMP ON CONCRETE PANELS



COMMUNAL TABLE STOOLS

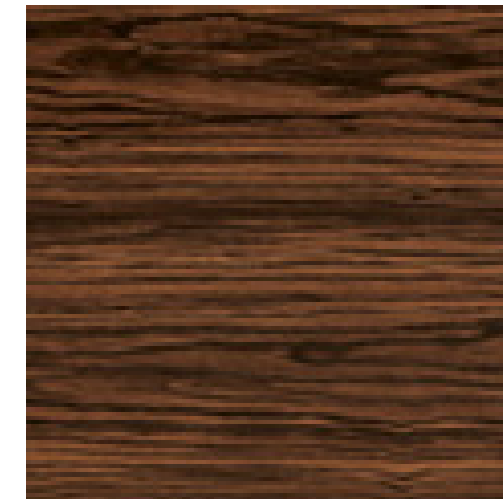


COMMUNAL TABLE



TEXTURE LIGHT CONCEPT

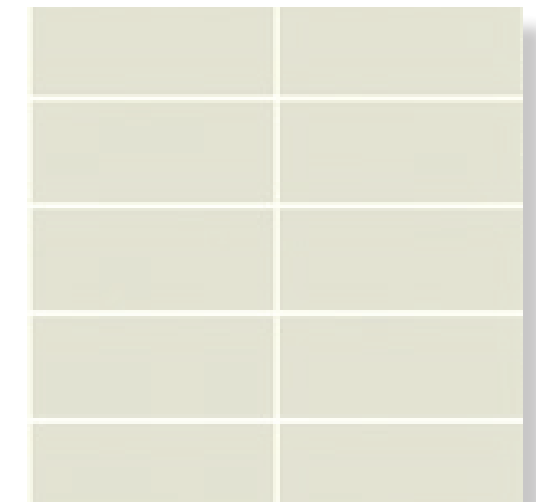
GRAPHICS WALL + COMMUNAL SEATING



WALNUT VENEER
LAMINART #7962



CORIAN COUNTERTOPS



TILE BACKSPLASH
4"X8"

CONDIMENT STATION SKETCH

FRONT
BANQUETTE
OPTION
SHOWN

THE STAGE IS HIGHLIGHTED WITH COLOR AND TEXTURE. A LARGE WOVEN GRAPHIC REFLECTS THE ARTISAN AND HANDCRAFTED APPROACH TO THE AREPAS MAKING.



CONCEPT IMAGERY FOR GRAPHICS WALL

GRAPHICS WALL

NOTE:
CEILING
OPTION
2 IS SHOWN

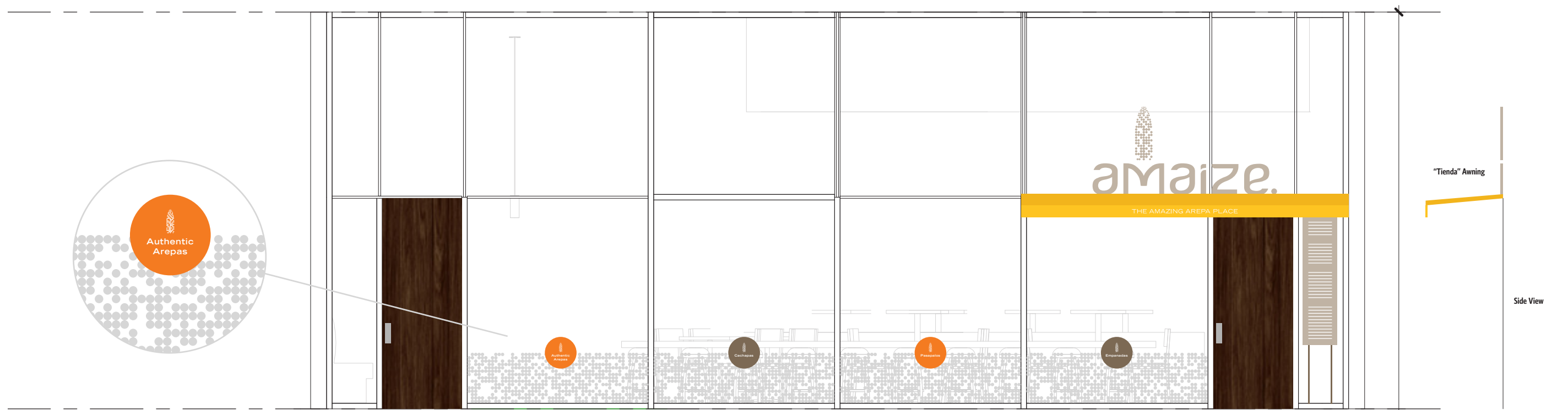
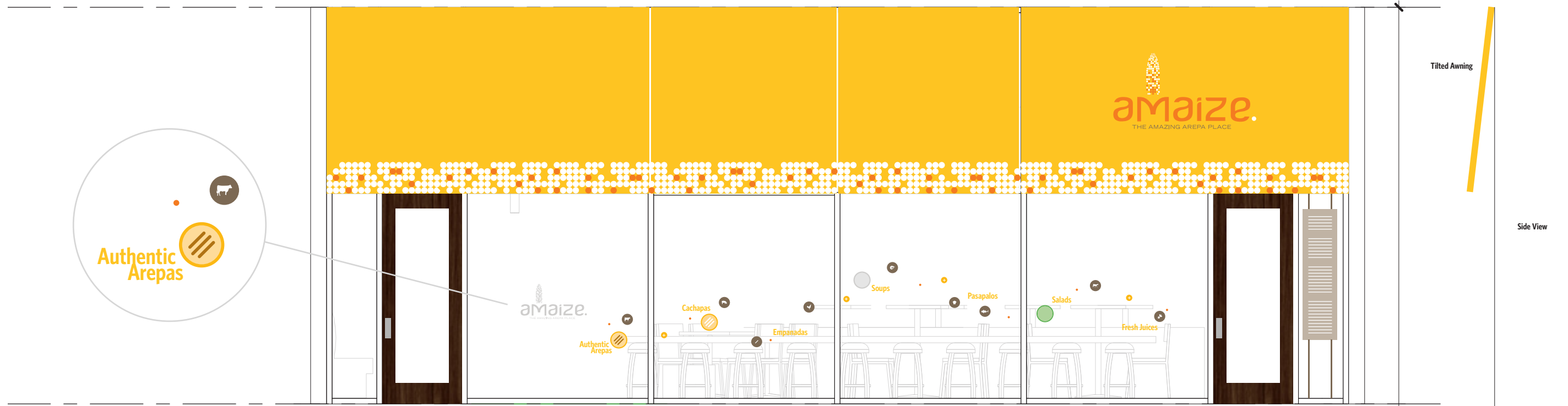
COMMUNAL
TABLE AT
BAR OPTION
SHOWN



CONDIMENT + BEVERAGE
STATION

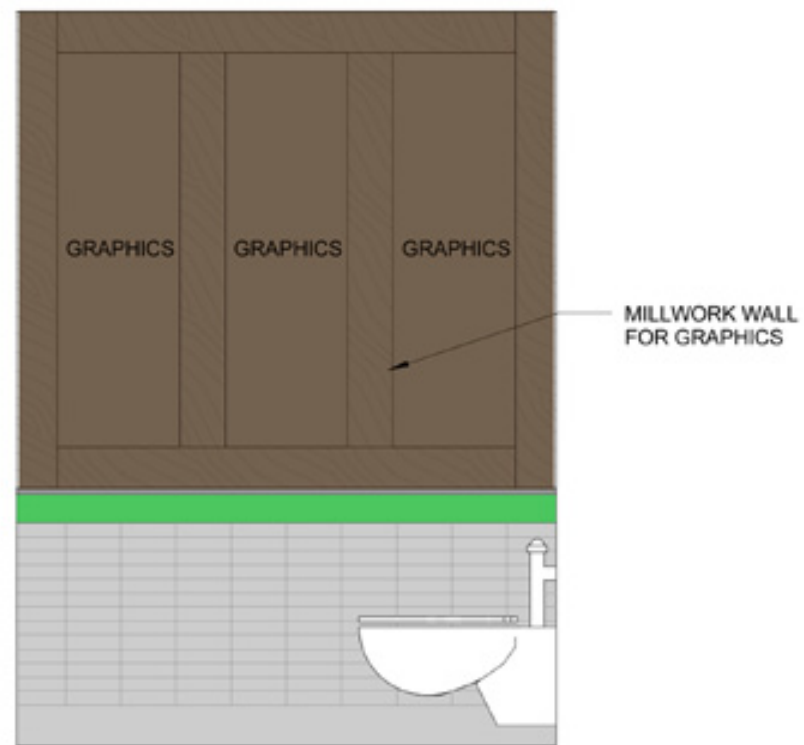
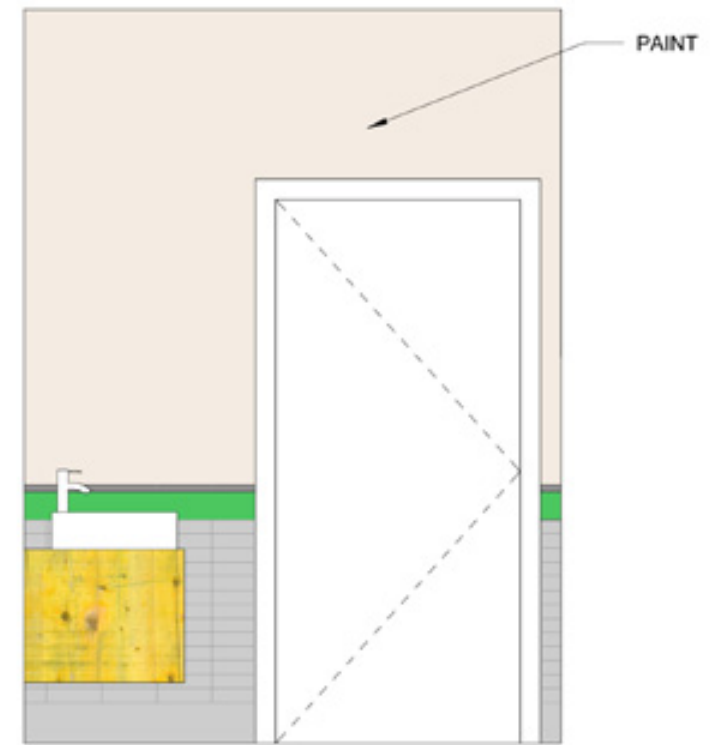
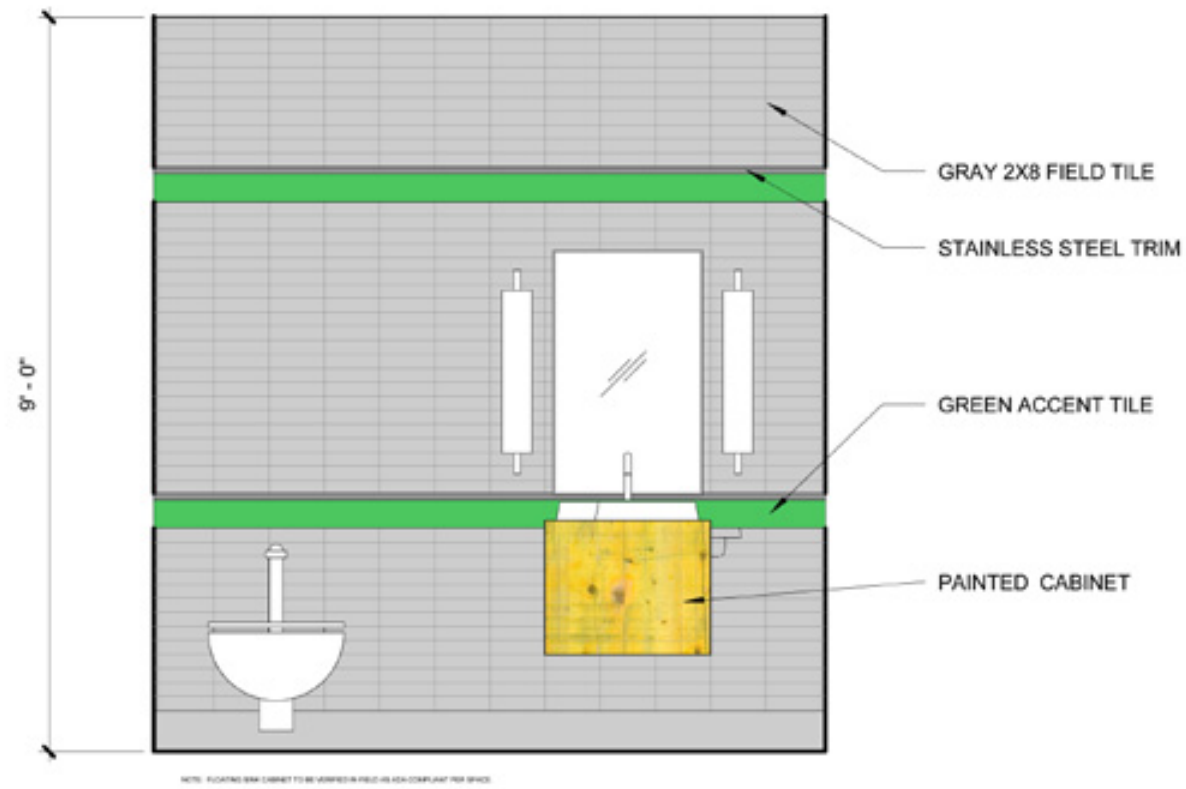
COMMUNAL SEATING
AREA WITH FEATURE LIGHT

COMMUNAL SEATING AREA + CONDIMENT STATION



STOREFRONT DESIGN OPTIONS

NOTE: DRAWINGS ARE TO BE VIEWED AS DESIGN INTENT ONLY AND MAY NEED TO BE ALTERED DURING CONSTRUCTION DOCUMENTATION TO MEET CODE REQUIREMENTS PER LOCAL JURISDICTIONS. DRAWINGS MAY NOT BE TO SCALE AND ARE NOT INTENDED FOR CONSTRUCTION.



RESTROOM DESIGN

NOTE: DRAWINGS AND SPECIFICATIONS ARE TO BE VIEWED AS DESIGN INTENT ONLY AND MAY NEED TO BE ALTERED DURING CONSTRUCTION DOCUMENTATION TO MEET CODE REQUIREMENTS PER LOCAL JURISDICTIONS. DRAWINGS MAY NOT BE TO SCALE AND ARE NOT INTENDED FOR CONSTRUCTION.

SPECIFICATIONS

NOTE: DRAWINGS AND SPECIFICATIONS ARE TO BE VIEWED AS DESIGN INTENT ONLY AND MAY NEED TO BE ALTERED DURING CONSTRUCTION DOCUMENTATION TO MEET CODE REQUIREMENTS PER LOCAL JURISDICTIONS. DRAWINGS MAY NOT BE TO SCALE AND ARE NOT INTENDED FOR CONSTRUCTION.

FIELD TILE:
 DAL TILE
 MODERN DIMENSIONS
 2X8 DESERT GRAY GLOSS
 GROUT TO MATCH

ACCENT TILE:
 FIRECLAY TILE
 DEBRIS SERIES
 SHAMROCK MATTE
 2"X2"

PAINT:
 BENJAMIN MOORE
 HAWTHORNE YELLOW HC-4

FixtureUniverse
 1.800.462.8166 Request a Call
 LIVE CHAT Available Now
 Account | Order Status | DIY Toolkit | Pro Services | Help | Rewards | Daily Deals
 Search for plumbing fixtures
 SINKS | FAUCETS | VANITIES | TOILETS | SHOWERS | BATHTUBS | BATHROOM ACCESSORIES | BATHROOM | KITCHEN | COMMERCIAL PLUMBING | MORE | SALE
 Special Offers and Discounts by email Enter Your Email Sign Up
 FREE SHIPPING when you spend \$35+
 International Shipping available through iCNGC
 No Hassle every day
 Low Price Guarantee | Volume Pricing Available | Daily Deals - A New Deal Every Day | Commercial Plu



Calise Faucet Inc 2010018 Rainbow Single Hand Lavatory Faucet
 by Calise Faucet

List Price ~~\$404.22~~ [Low Price Guarantee](#)
 Price **\$84.00**
 You Save **\$17.22**
 You Earn **84** [Reward Points](#) [Ships De](#)

Finish **Polished Chrome** [Option Images](#)
 Quantity **1**

[Add to Compare](#) | [Add to Wish List](#) | [Add to Project](#)

Dimensions & Weights

Spout Reach 4.6 inches
Spout Height 2.8 inches

Quick Links

[Dimensions](#) | [Q & A](#)
[Reviews](#) | [Brand Info](#)

Overview

Rainbow Single Handle Lavatory Faucet

When the sun shines through a light rain, it makes a rainbow. The Rainbow series faucets are described as an arc in your sky!

- Single handle lavatory faucet with PVC pop-up drain
- All mounting hardware and hot/cold waterlines are included
- Drip free ceramic disc cartridge for smooth and long lasting operation
- Brilliance finish will never tarnish, dull or corrode
- 1 hole sink configuration
- Solid brass construction
- Easy to install with instructions included
- 2.2 GPM (8.3 LPM) max at 60 PSI
- ADA compliant and WaterSense certified

Materials Brass
Listing ADA, WaterSense
Warranty Limited Lifetime

Customer Reviews

This product has no customer reviews yet

[Write an online review](#) and be the first to share your thoughts with other customers

Questions & Answers

RESTROOM FAUCET

LightingUniverse
 1.888.404.2744 Request a Call
 LIVE CHAT Available Now Mon-Fri Sat-Su
 Account | Order Status | DIY Toolkit | Pro Services | Help | Rewards | Daily Deals
 Search for lighting fixtures
 CEILING LIGHTS | WALL LIGHTS | OUTDOOR LIGHTING | FANS | LAMPS | COMMERCIAL LIGHTING | TRACK LIGHTING | ACCENT LIGHTING | MORE | SALE
 Special Offers and Discounts by email Enter Your Email Sign Up
 FREE SHIPPING when you spend \$35+
 International Shipping available through iCNGC
 No Hassle every day
 Lighting On Sale | Modern Lighting | Commercial Lighting | Volume Pricing Avail



EGLO 85338A 2 Light Mono Wall Sconce, Chrome
 Part of the [Mono Collection](#) by EGLO

List Price ~~\$77.50~~ [Low Price Guarantee](#)
 Price **\$62.00**
 You Save **\$15.50**
 You Earn **62** [Reward Points](#)

Quantity **1**

[Add to Compare](#) | [Add to Wish List](#) | [Add to Project](#)

Dimensions & Weights

Width 4 inches
Projection 3 inches
Height 13 inches
Weight 2lbs

Quick Links

[Dimensions](#) | [Q & A](#)
[Accessories](#) | [Brand Info](#)
[Reviews](#)

Overview

- Indoor 2-light wall/ceiling lamp

Finish Chrome
Shade Frosted Opal
Light Bulb [\(2\)40w B10 Cand F Incand \[Compare Bulbs\]](#)

Voltage 120 volt
Weight 2 Pounds
Listing Quick Ship, Made In Europe, ADA
Install Position Either Up or Down
Bulb sold separately

Shop Accessories

Item you're currently viewing:

	EGLO 85338A 2 Light Mono Wall Sconce, Chrome	Qty 1	Price \$62.00 You Save \$15.50
--	--	--------------	---

Compare Our Price

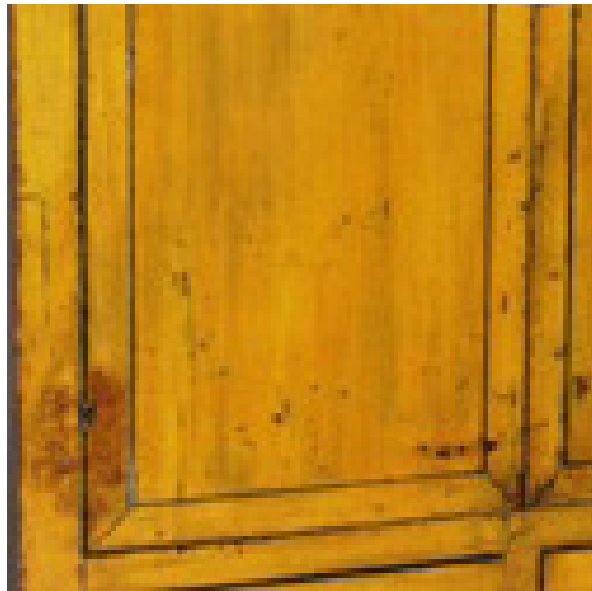
Recommended For You

- PLC Lig Nuova \$77.40
- PLC Lig Valencia \$77.40 [Write a R](#)
- PLC Lig Wall \$70.20 [Write a R](#)
- Taller U \$713.60 [Write a R](#)

RESTROOM SCONCE

RESTROOM FIXTURE SPECIFICATIONS

NOTE: DRAWINGS AND SPECIFICATIONS ARE TO BE VIEWED AS DESIGN INTENT ONLY AND MAY NEED TO BE ALTERED DURING CONSTRUCTION DOCUMENTATION TO MEET CODE REQUIREMENTS PER LOCAL JURISDICTIONS. DRAWINGS MAY NOT BE TO SCALE AND ARE NOT INTENDED FOR CONSTRUCTION.



PAINTED VANITY

VESSEL SINK

FixtureUniverse 1.800.462.8166 LIVE CHAT Available Now

Account | Order Status | DIY Toolkit | Pro Services | Help | Rewards | Daily Deals

Search for plumbing fixtures

SINKS | FAUCETS | VANITIES | TOILETS | SHOWERS | BATHTUBS | BATHROOM ACCESSORIES | BATHROOM | KITCHEN | COMMERCIAL PLUMBING | MORE | SALE

Special Offers and Discounts by email Enter Your Email Sign Up

FREE SHIPPING when you spend \$35** International Shipping available through iCNGC No Hassle every day

Low Price Guarantee | Volume Pricing Available | Daily Deals - A New Deal Every Day | Commercial Plu

Home > Plumbing Fixtures> Bathroom > Bathroom Sinks > Vessel Sinks > Contemporary / Modern Plumbing > Kraus KCV-142 White Round Ceramic

Kraus KCV-142-CH White Round Ceramic Vessel Sink

Part of the [White Ceramic Collection](#) by Kraus

List Price ~~\$240.00~~
 Price **From \$89.95 + Free Shipping**
 You Save **Up to \$130.05**
 You Earn **Up to 110 Reward Points**

Drain Option
 Select Drain Option

Faucet/Drain Finish
 Select Faucet/Drain Finish [Option Images](#)

Quantity
 1

[Add to Compare](#) | [Add to Wish List](#) | [Add to Project](#)

600808G

[Move mouse over image to zoom in](#)

[Dimensions](#) | [Q & A](#)
[Reviews](#) | [Brand Info](#)

Dimensions & Weights

Bowl Depth	5½ inches
Center to Center	11¼ inches
Diameter	18½ inches
Height	5½ inches

Overview

Once ordered, this item may not be cancelled.

Kraus White Round Ceramic Sink and Pop Up Drain with Overflow

- Add an elegant touch to your bathroom with a Kraus ceramic washbasin
- Ceramic sink boasts a smooth, shiny white exterior and interior
- Bathroom sink will enhance any home improvement remodel
- Resistant to stains and easily cleaned and maintained
- Smooth non-porous surface, prevents from discoloration and fading
- Designed for above counter installation with standard US plumbing connections
- Solid brass umbrella pop-up drain with overflow is included
- Installation part is available in chrome and satin nickel finishes
- Dimensions: 18.5 inches Dia x 5.5 inches H
- 1.75-inch standard drain opening
- Drain dimensions: 7 inches H x 3 inches Dia at the top with 1.25 inches Dia at the bottom
- Manufactured by Kraus
- Limited Lifetime Warranty

Sink Finish White
Materials Solid Brass/Glass

DecorUniverse 1.800.497.0704 LIVE CHAT Available Now

Account | Order Status | DIY Toolkit | Pro Services | Help | Rewards | Daily Deals

Search for home furnishings

MIRRORS | HOLIDAY DEALS | WALL ART | HOME DECOR ACCESSORIES | SEASONAL DECOR | FIREPLACES & MANTELS | CLOCKS | DECOR FURNITURE | MORE | SALE

Special Offers and Discounts by email Enter Your Email Sign Up

FREE SHIPPING when you spend \$35** International Shipping available through iCNGC No Hassle every day

Low Price Guarantee | Shop All Brands | Volume Pricing Available | Daily Deals - A New Deal Every Day

Home > Home Furnishings > Mirrors > Wall Mirrors > Contemporary / Modern Decor > Southern Enterprises ATG449 Vogue Wall

Southern Enterprises ATG449 Vogue Wall Mirror

Part of the [Vogue Collection](#) by Southern Enterprises

List Price ~~\$132.50~~ [Low Price Guarantee](#)
 Price **\$99.99**
 You Save **\$32.51**
 You Earn **100 Reward Points** [Want it shipped today? Order in 0 hour and 0 min](#)

Finish
 Chrome [Option Images](#)

Quantity
 1

[Add to Compare](#) | [Add to Wish List](#) | [Add to Project](#)

6859321S

[Move mouse over image to zoom in](#)

8 - 8 of 8

Dimensions & Weights

Width	22 inches
Thickness	1¼ inches
Height	36 inches
Weight	25lbs

Overview

The contemporary elegance of the Vogue Wall Mirror will bring a pleasantly distinct style to your home. This elegant mirror can be used to achieve a formal atmosphere or a casual contemporary home setting.

- Durable metal frame
- Ready to hang
- No assembly required

Materials Metal/Glass
Weight 25 Pounds
Wall Mirror Special Features Antique, Beveled, Corresponding Dresser

Quick Links

[Dimensions](#) | [Q & A](#)
[Reviews](#) | [Manuals](#) | [Brand Info](#)

Items in this collection

Item you're currently viewing:

	Southern Enterprises ATG449 Vogue Wall Mirror	Qty	Price
	Chrome	1	\$99.99
			You Save \$32.51

Compare Our Price

KitchenSource.com

Coordinating Items

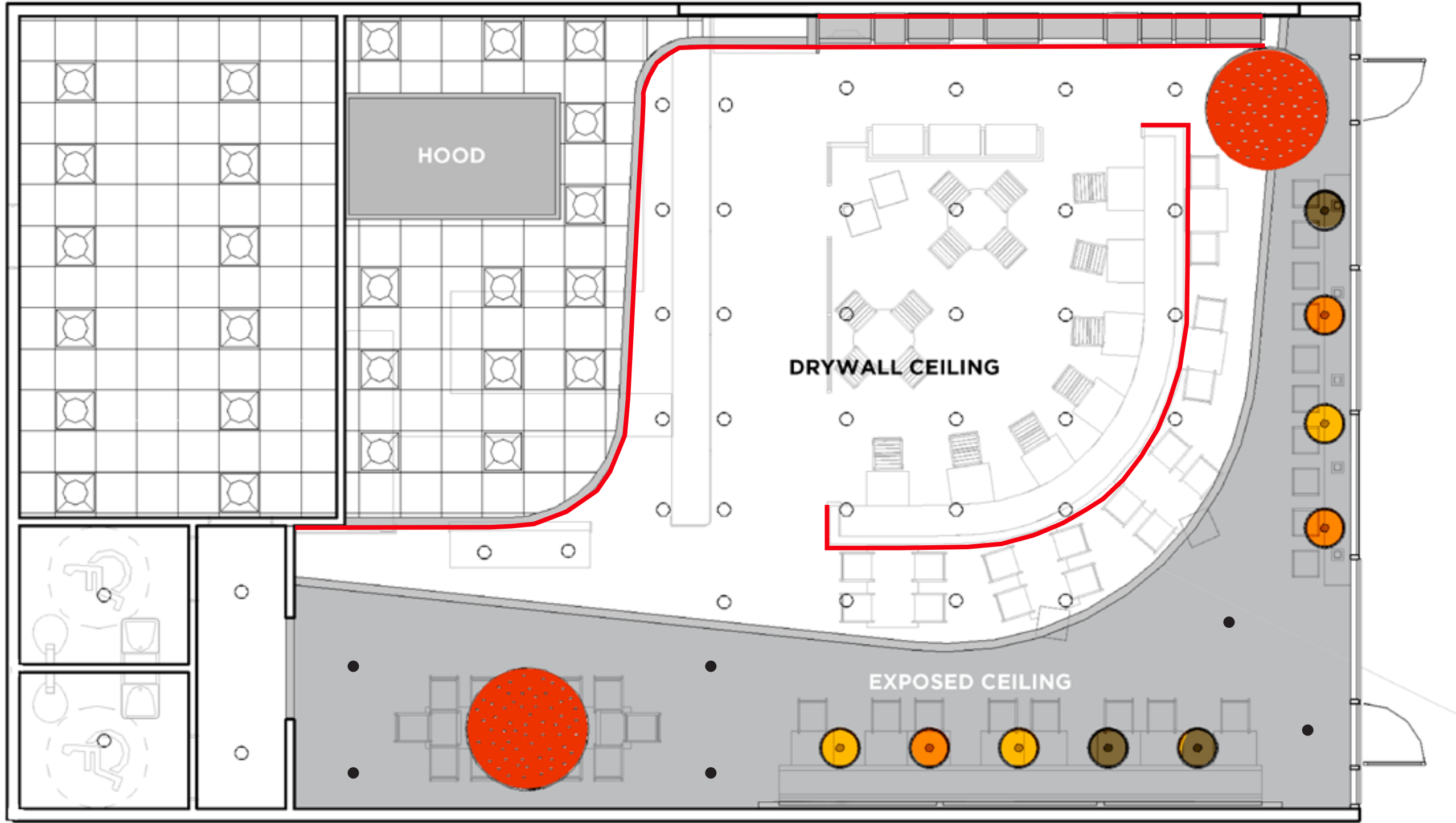
- Southern Enterprises \$79.99
- Southern Enterprises \$199.95
- Southern Enterprises \$79.99



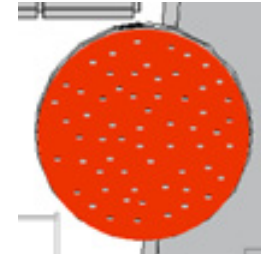
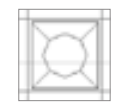


[View more coordinating items](#)

MIRROR

RESTROOM FIXTURE SPECIFICATIONS

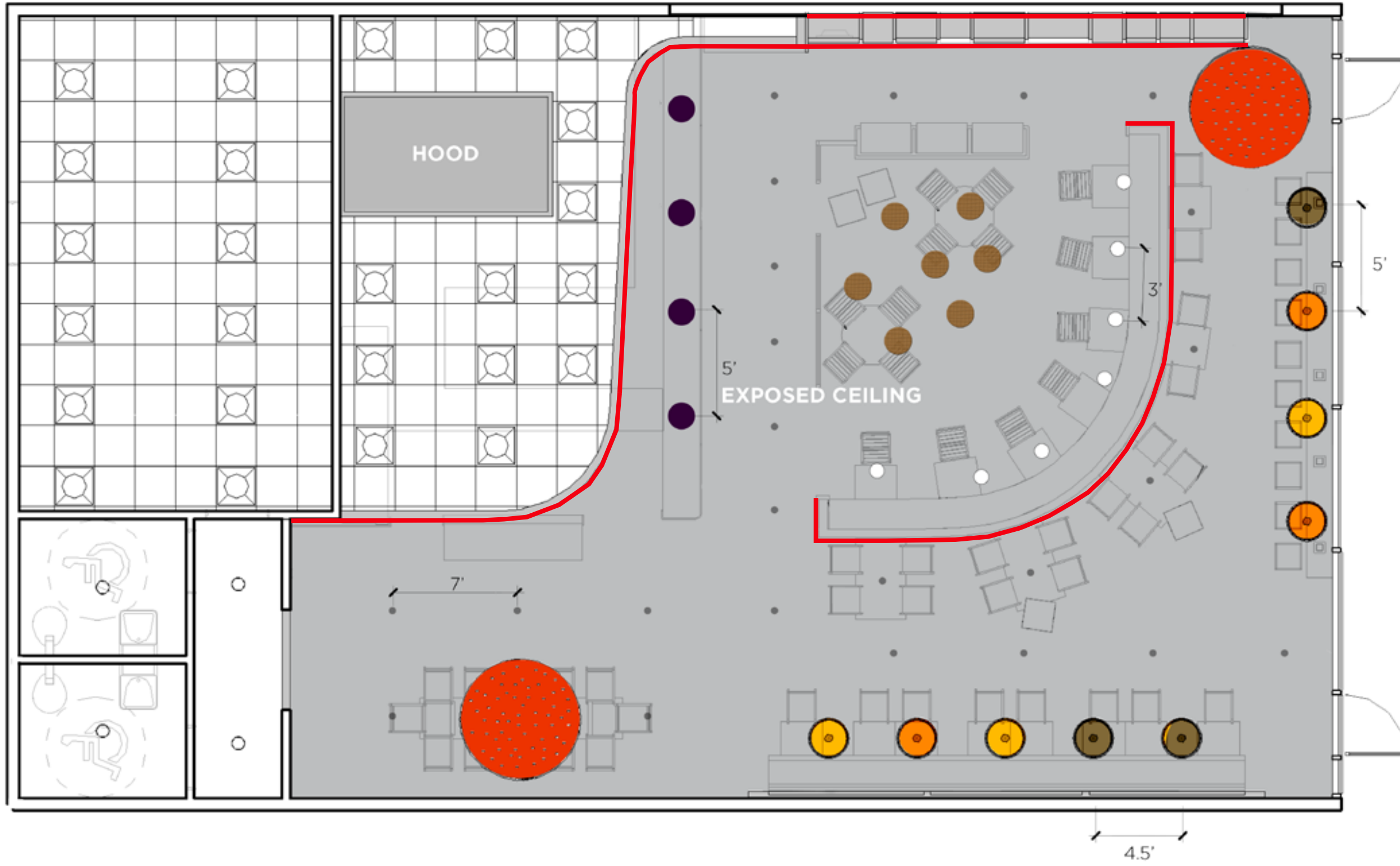
NOTE: DRAWINGS ARE TO BE VIEWED AS DESIGN INTENT ONLY AND MAY NEED TO BE ALTERED DURING CONSTRUCTION DOCUMENTATION TO MEET CODE REQUIREMENTS PER LOCAL JURISDICTIONS. DRAWINGS MAY NOT BE TO SCALE AND ARE NOT INTENDED FOR CONSTRUCTION.



- A  6" ROUND DOWNLIGHT
- B  CUSTOM WOOD FIXTURE
- C  CUSTOM TEXTURE FIXTURE
- D  FLUORESCENT 2'X2' FIXTURE
- E  CONCEALED LED TAPE
- F  MONOPOINT

CEILING/LIGHTING PLAN

NOTE: DRAWINGS ARE TO BE VIEWED AS DESIGN INTENT ONLY AND MAY NEED TO BE ALTERED DURING CONSTRUCTION DOCUMENTATION TO MEET CODE REQUIREMENTS PER LOCAL JURISDICTIONS. DRAWINGS MAY NOT BE TO SCALE AND ARE NOT INTENDED FOR CONSTRUCTION.



- A 6" ROUND DOWNLIGHT
- B CUSTOM WOOD FIXTURE
- C CUSTOM TEXTURE FIXTURE
- D FLUORESCENT 2'X2' FIXTURE
- E CONCEALED LED TAPE
- F MONOPOINT
- G GLOBE PENDANT (AT VARYING HEIGHTS)
- H WEIGHT PENDANT
- G WOOD PENDANT

CEILING/LIGHTING PLAN OPTION 2







NOTE: DRAWINGS AND SPECIFICATIONS ARE TO BE VIEWED AS DESIGN INTENT ONLY AND MAY NEED TO BE ALTERED DURING CONSTRUCTION DOCUMENTATION TO MEET CODE REQUIREMENTS PER LOCAL JURISDICTIONS. DRAWINGS MAY NOT BE TO SCALE AND ARE NOT INTENDED FOR CONSTRUCTION.

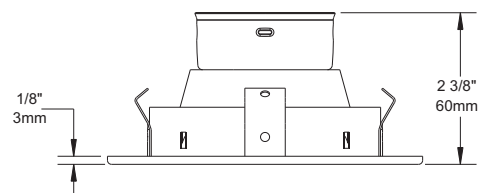
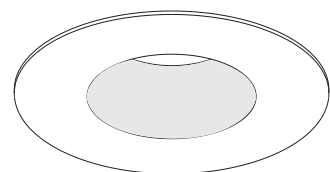
SPECIFICATION SHEET

4" 2000 SERIES

R2000V

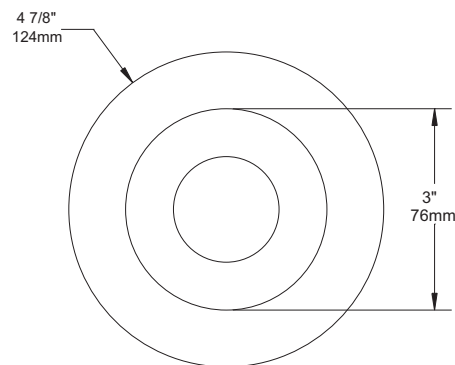
REGRESSED TRIM WITH NATURAL FROSTED SMOOTH GLASS REFLECTOR (SM)

	YES
	35-50W
	Three available glass reflector colors : Natural, Blue and Green For a Natural glass reflector : R2000V-XXSM For a Blue glass reflector : R2010V-XXSM For a Green glass reflector : R2030V-XXSM
	Insulated ceiling housing ISMR2000M, ISMR2000E35, ISMR2000M35, ISMR2000E37, ISMR2000M37
	New construction housing NW2000CM, NW2000E, NW2000LM
	Remodel housing IT2000M, IT2000E



COMPATIBLE HOUSINGS

50W MR16	37W MR16	35W MR16
ISMR2000M IT2000M IT2000E NW2000CM NW2000E NW2000LM	ISMR2000E37 ISMR2000M37	ISMR2000E35 ISMR2000M35



TRIM FINISHES

-01 WHITE	-04BR BRUSHED CHROME	-08 ANTIQUE SILVER
-02 BLACK	-05 ARCHITECTURAL BRONZE	-11 MATTE WHITE
-03 24K GOLD	-06 ANTIQUE COPPER	-12BR BRUSHED NICKEL
-04 CHROME	-07 ANTIQUE BRASS	-13 SATIN NICKEL
		-14 ALMOND

Unless otherwise indicated, trims are for interior use only. For exterior use and up to wet conditions, **MARINE GRADE** treatment is recommended. Available for finishes -01, -02, -05, -06, -11 and -14 only.



Project _____
Representative _____

CONTRAST LIGHTING | 1009, rue du Parc Industriel, Saint-Jean-Chrysostome, Qc, CAN G6Z 1C5 Tel.: 1-888-839-4624 Fax : 1-877-839-7057
info@contrastlighting.com www.contrastlighting.com

JULY 2010

SEE ARCHITECTURAL DETAILS

B

SEE ARCHITECTURAL DETAILS

C

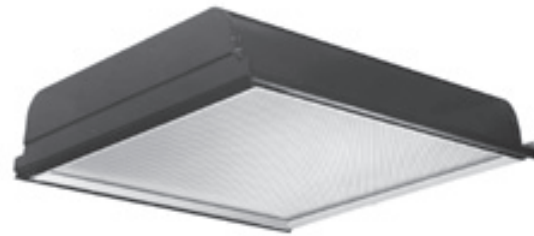
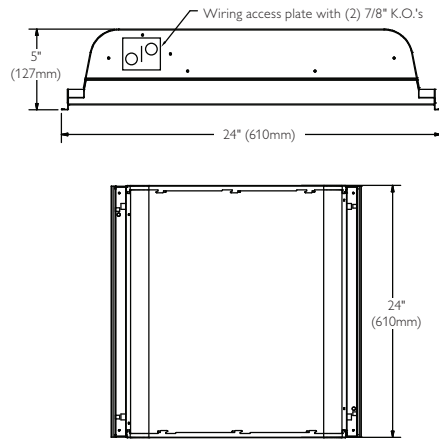
A

LIGHTING SPECIFICATIONS

SpecPlus

Recessed 2'X2' Luminaire, LED

Page 1 of 3



Ordering Information

SpecPlus	Body Style	Fixture Size	Ceiling Type	Lens Frame	Lens Shielding	Lumen Category	Color Temp	Voltage	Driver Type	Options
SP Recessed Luminaire	S S=Static	22 22 = 2' X 2' (Nominal size)	G G = 9/16" or 15/16" Grid	FS = Flat steel frame FA = Flat aluminum frame RA = Regressed aluminum frame	KA = 0.156 Prismatic acrylic lens VA = 0.095 Prismatic acrylic lens	25A = 2500 lumens 33A = 3300 lumens 38A = 3800 lumens 42A = 4200 lumens (Approximate delivered values. Consult IES file)	40 = 4000K Consult representative for other color temperature options. (Approximate values. Consult IES file)	U = Universal 120-277v	LAG = LED Driver Consult representative for dimming options	Add appropriate suffix to catalog no., i.e.: (C)

Features

- Prismatic acrylic lens.
- Flat steel door frame with 500 square inch lens opening.
- Can provide 52 initial footcandles at 0.56 watts per square foot.
- Delivers 3860 lumens with just 44.9 input watts.
- Field replaceable LED array and drivers accessible from below.
- Integrated thermal management system conducts heat away from LEDs and transfers it to the surrounding environment.
- Factory calibrated intelligent driver capable of providing various lumen outputs to balance energy savings with lighting application needs.
- High efficiency LEDs have 50,000 hour rated life at L70.
- Predicted L70 lifetime is based on LED manufacturer's supplied LM-80 data and in-situ laboratory testing.
- Black body to dissipate heat from LEDs.
- 5" deep body.
- Earthquake/Hold-down clips.
- Hemmed over side rails for maximum safety.
- Spring loaded rooster head latches.
- Construction to meet NYC Code Requirements or Chicago Plenum is available.
- Not for continuous row mounting.
- Five-year warranty on luminaire, LED boards and driver.

Job Information **Type:**

Job Name:

Cat. No.:

Notes:

PHILIPS
LIGHTOLIER



TokiLum™

TokiLum uses high-output LEDs to provide an indirect wash of light on building facades, underneath step-nosings and from within very shallow ceiling coves. In exposed applications, the LEDs create distinct points of vibrant light.



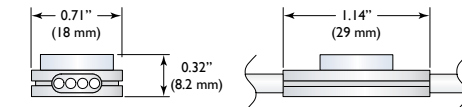
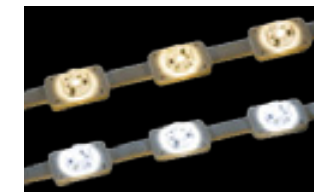
TokiLum LED modules are tightly sealed within an all-environment package and approved for use in wet-location settings. The system operates efficiently at 6VDC. This lower voltage produces very little heat, adding to TokiLum's reliability.

How to Specify

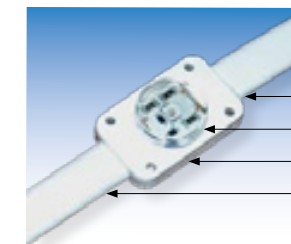
TokiLum is available in LED module spacings of 2" and 4". LEDs can be specified 3000K or 6500K.

LUM - 50 - IW

LED Spacing		LED		
Code	Spacing	Code	Kelvin	Watts/Volts
50	2" (50 mm)	IW	3000K	0.48 W / 6VDC
100	4" (100 mm)	WH	6500K	0.48 W / 6VDC



Specifications



All plastic components are resistant to Ultraviolet Light in accordance with standard UL 746C.

Flexible Conductors are #18 AWG

Light Sources are 0.48 Watt/6VDC LEDs

LED Modules are permanently sealed to cable

Insulation is flexible PVC with flammability rating UL 94V-0



Wet-Location Listed

This product is protected under U.S. and Foreign Patents.

2 | TOKISTAR LIGHTING

D

LIGHTING SPECIFICATIONS

E

Track lighting – Professional – Prospec



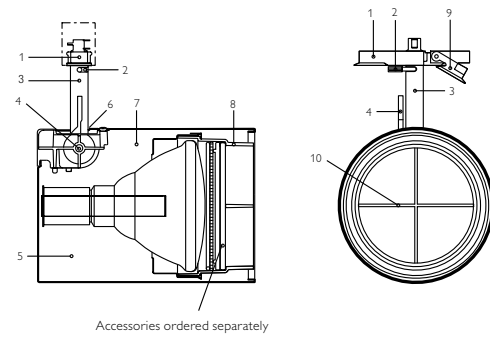
ProSpec cylinders

ProSpec line voltage

ProSpec line voltage cylinders feature a classic design that is easily integrated into various architectural environments. Each unit includes the ProSpec media cartridge which can hold up to 3 accessories and allows quick and convenient changing of filters, louvers and screens.

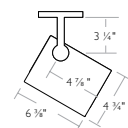
Features

- 1. Flush adapter** inserts easily into track and provides separate mechanical and electrical connection.
 - 2. Lever** energizes fixture electrically by 90° rotation. Fixture cannot be mechanically engaged or disengaged when powered.
 - 3. Stem:** constructed of stainless steel; 5/8" OD; .049" wall thickness.
 - 4. Tru-lock** aiming mechanism allows simultaneous horizontal and vertical locking. Full tension is maintained even when braking lever is released to hold aiming position.
 - 5. Finish:** all painted finishes are powder coated baked enamel.
 - 6. Aiming indicator** allows precise fixture aiming.
 - 7. Housing:** 20 gauge (.036") drawn steel construction. Hemmed front edge provides superior durability, additional stiffness; prevents chipping and enhances appearance.
 - 8. Media cartridge** allows convenient loading and removal of up to 3 accessories without disturbing aiming adjustment. Easily installed and removed with a simple twisting motion. Constructed of formed aluminum.
 - 9. Clamping wedges:** cam-operated wedges expand or release gripper springs from track ledge; gripper springs hold adapter securely within track.
 - 10. Cross blade louver** extruded aluminum, 1" deep, provides additional shielding and can be easily removed.
- For Accessories see page 2.164.



Accessories ordered separately

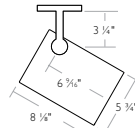
4 3/4" Cylinder



26030WH Matte white
26030BK Matte black
 PAR30 75W max.

Accessories: AF3 lenses; ADF3 color filters; AL3 louvers; AS3 screens

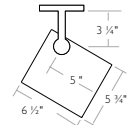
5 3/4" Cylinder



26038WH Matte white
26038BK Matte black
 PAR38 250W max.

Accessories: AF4 lenses; ADF4 color filters; AL4 louvers; AS4 screens (150W max. w/accessories)

5 3/4" Cylinder



26383WH Matte white
26383BK Matte black
 PAR38/3 150W max.

Accessories: AF4 lenses; ADF4 color filters; AL4 louvers; AS4 screens

F

LIGHTING SPECIFICATIONS

G

STUDIO JOTA



Rustica

Request a Quote

Size" 10" high x 5.5" wide

Bulb: Energy saving LED bulb recommended

Wood veneer pendant light with black electrical cord. Rustic, quirky and somewhat asymmetrical

Includes 5" diameter coordinating canopy (black) and 36" length of electrical cord.

HOME
COLLECTION
ABOUT
CONTACT
INFO

STUDIOJOTA.COM

Home » Vintage Industrial Lights » Ceiling Lighting » The Mig - Retro Steel Industrial Pendant - Grey

The Mig - Retro Steel Industrial Pendant - Grey



The Mig Retro Steel Industrial Pendant Light, Grey
Click to enlarge

CODE: MIG-008-Grey

\$164.00

Cords:

[ADD TO MY WISH LIST](#)

[CUSTOMER REVIEWS](#) [SEND TO FRIEND](#)

Finish Chart / Features

Cord Style: [Click to View](#)

Product Details

A classic twist to an old industrial favorite, acetylene tank tops have taken the form of industrial lighting. Removed from their original use, but still performing an industrial task, these re-purposed and eco-friendly tops are sure to add a "green" look your industrial loft, farm house and retro setting.

- **Features:** Original Steel Acetylene Tank Lids
- **Mounting:** 8' of Standard Cord | 6' of Cotton Cord (See Cord Options)
- **Ceiling Canopy Dimensions:** 5" Diameter
- **Condition:** Each Fixture and Finish is Unique
- **Max Wattage Per Socket:** 60 Watt Standard Incandescent (Bulb Not Included)
- **Use:** CSA Listed for Damp Locations (Except When Cotton Cord Mounted)
- **Size:** W 4" x H 8"



Home » Vintage Industrial Lights » Ceiling Lighting » The Indy Porcelain Socket Pendant

The Indy Porcelain Socket Pendant



Indy Industrial Pendant, Porcelain Socket, Silver Cord, Nostalgic Edison 40 Watt G30 Light Bulb (Not Included) | No Turn Key
Click to enlarge



CODE: BLE-C-PINDY

\$105.00

Cord:

Edison Light Bulbs:

[ADD TO MY WISH LIST](#)

[CUSTOMER REVIEWS](#) [SEND TO FRIEND](#)

Finish Chart / Features

Cord Style: [Click to View](#)

Product Details

A classic reproduction of early industrial pendants! This drop cord fixture follows a simple industrial style and features a ceramic porcelain socket and cloth cord option. Although based on vintage lights, the Indy pendant has a modern, minimalist feel as well with its white porcelain finish. Today's popular uses include accenting above dining tables, reading areas and counter tops. A [Nostalgic Edison Bulb](#) (sold separately) will give the Indy the finishing vintage touch! [Read More >](#)

Product Details:

- **Mounting:** 8' of Standard Cord | 6' of Cotton Cord (See Cord Options)
- **Ceiling Canopy Dimensions:** 5" Diameter
- **Max Wattage Per Socket:** 200w Standard Incandescent (60w Maximum for Cotton Cords; Bulb Not Included)
- **Number of Sockets:** 1
- **Use:** CSA Listed for Dry Locations
- **Manufactured in the U.S.A.**

H LIGHTING SPECIFICATIONS

MAIN SEATING



A



B



C



D



E

CENTRAL DINING



F



G

NOTE: DRAWINGS AND SPECIFICATIONS ARE TO BE VIEWED AS DESIGN INTENT ONLY AND MAY NEED TO BE ALTERED DURING CONSTRUCTION DOCUMENTATION TO MEET CODE REQUIREMENTS PER LOCAL JURISDICTIONS. DRAWINGS MAY NOT BE TO SCALE AND ARE NOT INTENDED FOR CONSTRUCTION.

west elm

design lab we love collaborations blog

NEW FURNITURE BEDDING BATH RUGS - WINDOWS LIGHTING ACCESSORIES - PILLOWS MARKET DINING - KITCHEN HOLIDAY - GIFTS SALE

15% Off Dining Furniture sale ends 11.12

20% Off All Throws sale ends 11.20

GRAND OPENING west elm MARKET TOOLS TO MAKE WORK WONDERFUL

SALE Up To 70% Off Clearance shop before it's gone

Home > Furniture > Kitchen Furniture > Rustic Dining Chair

PREVIOUS 0 of 13 NEXT

Like 37 Tweet 0 +1 0 Pin 0

RUSTIC DINING CHAIR

\$199.00 SPECIAL \$169.00

OVERVIEW DIMENSIONS & CARE SHIPPING INFO

Modern rustic. Based on old schoolhouse seats and crafted from solid wood and raw steel, the minimalist Rustic Chair owes its good looks to the rich grain and warm, inviting color of acacia wood.

- Solid acacia wood with metal frame.
- 17" w x 20.5" d x 33.5" h.
- Fully assembled.
- Wipe clean.
- Imported.
- Sets are online/catalog only.

DINING CHAIR

\$199.00

QUANTITY: Individual

SPECIAL \$169.00

Individual

Delivery Surcharge: \$10.00



A LOCATION: MAIN DINING

FURNITURE SPECIFICATIONS

B LOCATION: MAIN DINING

TABLE TOPS: 25" SQUARE; 4'X2'6" ADA; CUSTOM BAR AND COMMUNAL

MANUF: WOOD GOODS
3075 RP SERIES CONSTRUCTION: RANDOM WIDTH CONTINUOUS LENGTH PLANKS IN MULTIPLE SPECIES STAVE: 20% EACH OF OAK, MAPLE, ASH, BIRCH AND CHERRY WITH EPOXY FILLED KNOTS, PHYSICAL DISTRESSING, EDGE DETAIL: RUSTIC WITH HAND SCRAPING, WITH V-GROOVING, STAIN: WG11 HONEY OAK



BASE: BLACK DISC

MANUF: GAR PRODUCTS



1200F SERIES DESIGN LINE



- Please note that all colors pictured in product images, finishes and materials may vary from their actual color
- Series ships FOB California
- Cast Iron Base and Steel Column
- Series standard with 3" columns
- 3" Bar Height Columns and Footrings available
- Series standard with Adjustable Black Glides
- [Click here](#) to see Parts section for Glides and Footrings

NOTE: DRAWINGS AND SPECIFICATIONS ARE TO BE VIEWED AS DESIGN INTENT ONLY AND MAY NEED TO BE ALTERED DURING CONSTRUCTION DOCUMENTATION TO MEET CODE REQUIREMENTS PER LOCAL JURISDICTIONS. DRAWINGS MAY NOT BE TO SCALE AND ARE NOT INTENDED FOR CONSTRUCTION.

FASHION SEATING.COM call now **1888-Stool-4-U** 786-6548

Search: **Headquarters for Value and Stylish Seating**

Chairs | **Bar Stools** | Tables | Patio Furniture | Booths / Lounge Furniture | Custom Furniture | Miscellaneous

Shop by Category: Bar Stools | **Aluminum Bar Stools** | Backless Bar Stools, Wood, Metal, Aluminum, Wood & Metal Bar Stools, Bamboo Bar Stools, Chrome Bar Stools, Fully Upholstered, Wicker Bar Stools, Rattan Bar Stools

Square Aluminum Dark Mahogany Bar Stool

Call us for a price quote to possibly get this low price:

Price: **\$66.25**

Seat Option: * [Select] * - required fields

Vinyl: * [Select]

Fabric: * [Select]

Quantity: *

SubTotal: **\$940.80**

Save More
 Buy 12 - 17 for **\$78.40**
 Buy 18 - 35 for **\$73.50**
 Buy 36 and up for **\$68.60**

Item Code: **AS-94AB**
 Dimensions: 16"W x 16"D
 Weight: 12 lbs.

feel free to call **1888-stool-4-U (786-6548)**

C LOCATION: FRONT BAR. OPTION: PAINT RED

FURNITURE SPECIFICATIONS

west elm design lab we love collaborations blog

NEW | **FURNITURE** | BEDDING | BATH | RUGS + WINDOWS | LIGHTING | ACCESSORIES - PILLOWS | MARKET | DINING + KITCHEN | HOLIDAY - GIFTS | SALE

15% Off Dining Furniture sale ends 11.12 | 20% Off All Throws sale ends 11.20 | GRAND OPENING west elm MARKET TOOLS TO MAKE WORK WONDERFUL | SALE Up To 70% Off Clearance shop before it's gone

Home > Furniture > Kitchen Furniture > Rustic Bar Stool + Counter Stool

RUSTIC BAR STOOL + COUNTER STOOL
 \$189.00 - \$378.00 **SPECIAL \$160.00 - \$321.00**

OVERVIEW | DIMENSIONS & CARE | SHIPPING INFO

Rustic yet refined, these stools owe their distinctive good looks to the rich grain and warm, inviting color of solid acacia wood. Raw steel legs add industrial style.

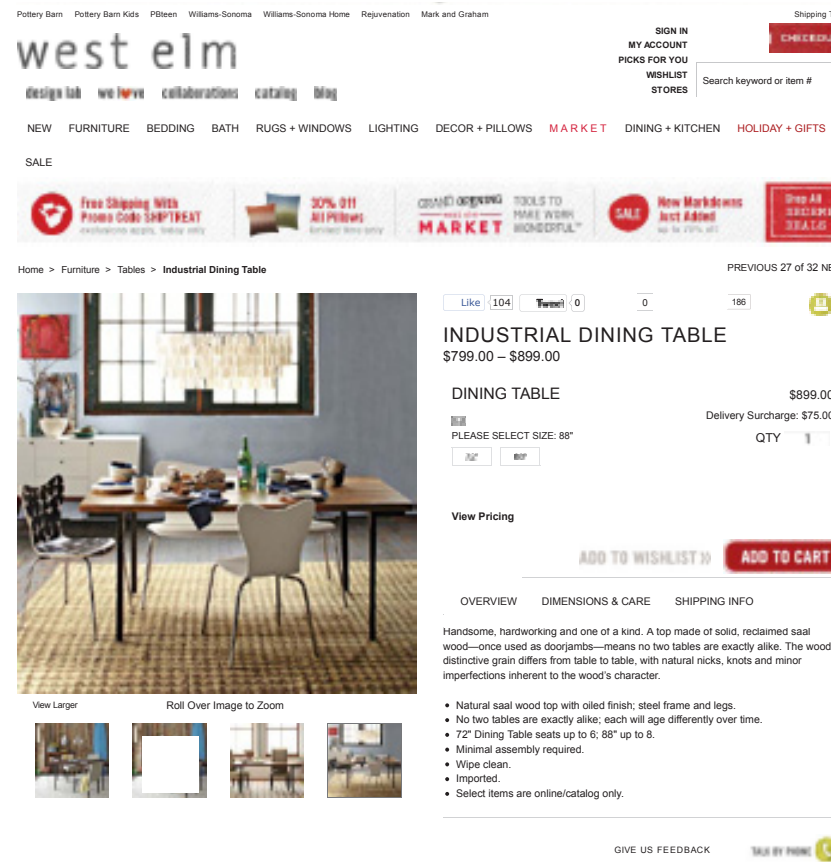
- Solid acacia wood seat, raw steel legs.
- Clean-lined, versatile design.
- Minimal assembly required.
- Wipe clean.
- Imported.

D LOCATION: COMMUNAL TABLE

NOTE: DRAWINGS AND SPECIFICATIONS ARE TO BE VIEWED AS DESIGN INTENT ONLY AND MAY NEED TO BE ALTERED DURING CONSTRUCTION DOCUMENTATION TO MEET CODE REQUIREMENTS PER LOCAL JURISDICTIONS. DRAWINGS MAY NOT BE TO SCALE AND ARE NOT INTENDED FOR CONSTRUCTION.

CUSTOM COMMUNAL TABLE

ALTERNATE:



E LOCATION: COMMUNAL TABLE- CUSTOM. ALT: SPEC ABOVE

FURNITURE SPECIFICATIONS

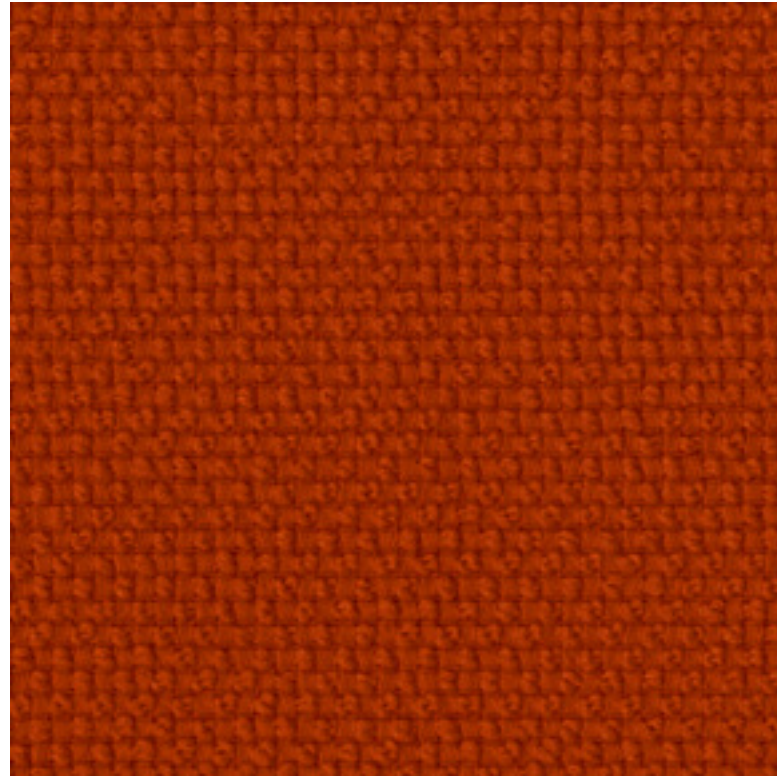


F FROM GOHOMELTD.COM LOCATION: CENTRAL DINING

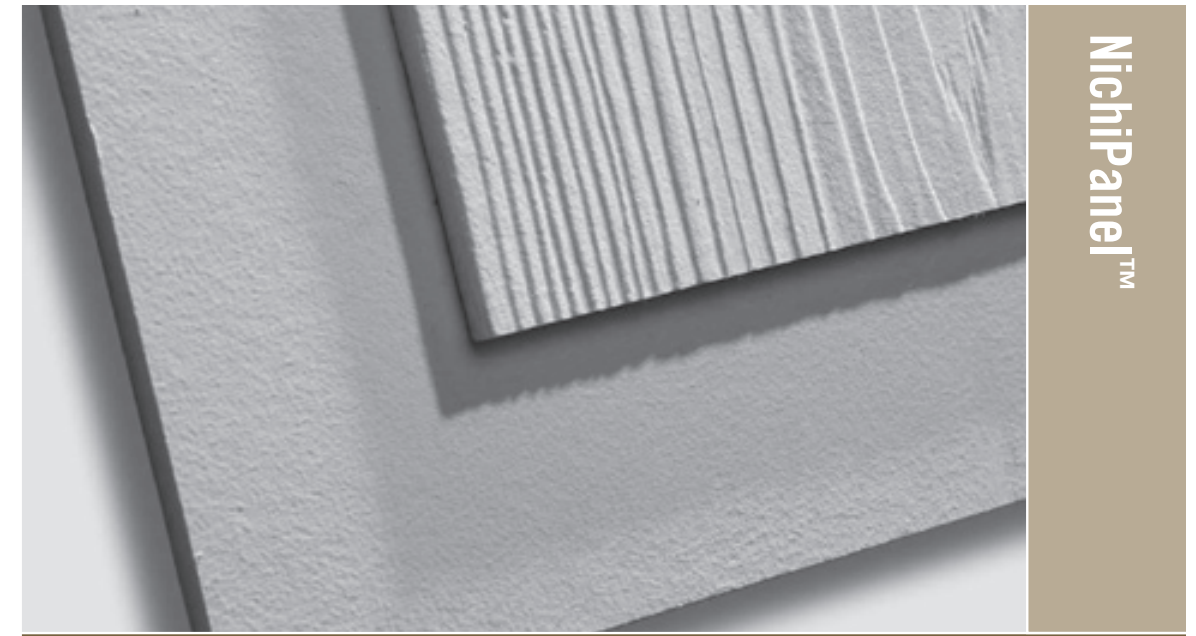


G FROM GOHOMELTD.COM LOCATION: CENTRAL DINING

NOTE: DRAWINGS AND SPECIFICATIONS ARE TO BE VIEWED AS DESIGN INTENT ONLY AND MAY NEED TO BE ALTERED DURING CONSTRUCTION DOCUMENTATION TO MEET CODE REQUIREMENTS PER LOCAL JURISDICTIONS. DRAWINGS MAY NOT BE TO SCALE AND ARE NOT INTENDED FOR CONSTRUCTION.



BANQUETTE FABRIC:
CARNEGIE FABRICS
BLISS #6012



NichiPanel™

NichiPanel™ siding is designed for vertical wall applications; full wall exteriors and the popular board and batten style can be achieved with NichiPanel™. The panels are available in 4' x 8', 4' x 10' and 4' x 12' panels and in classic smooth, cedar grain, stucco and grooved 8" o.c. cedar grain texture.* The 5/16" panels offer builders and home owners greater design flexibility while still getting the value of long lasting and low-maintenance fiber cement siding.

NichiPanel™ Options



NichiPanel™ Product Specifications

Profile			
Height (ft.)	4	4	4
Length (ft.)	8	10	12
Thickness (nominal in.)	5/16	5/16	5/16
Weight (lbs. per sq. ft.)	2.2	2.2	2.2
Weight (lbs. per panel)	74	92.5	111
Coverage (sq. ft. per panel)	32	40	48
Packaging (panels per pallet)	50	40	40

*Grooved 8" o.c. cedar is only available in 8' lengths.

CONCRETE WALL PANELS:
STUCCO FINISH
CORN ICON EMBELLISHED ONTO PANELS
PANELS PAINTED SHERWIN WILLIAMS
SW0044 HUBBARD SQUASH

FINISH SPECIFICATIONS

NOTE: DRAWINGS AND SPECIFICATIONS ARE TO BE VIEWED AS DESIGN INTENT ONLY AND MAY NEED TO BE ALTERED DURING CONSTRUCTION DOCUMENTATION TO MEET CODE REQUIREMENTS PER LOCAL JURISDICTIONS. DRAWINGS MAY NOT BE TO SCALE AND ARE NOT INTENDED FOR CONSTRUCTION.

Corian® Tumbleweed

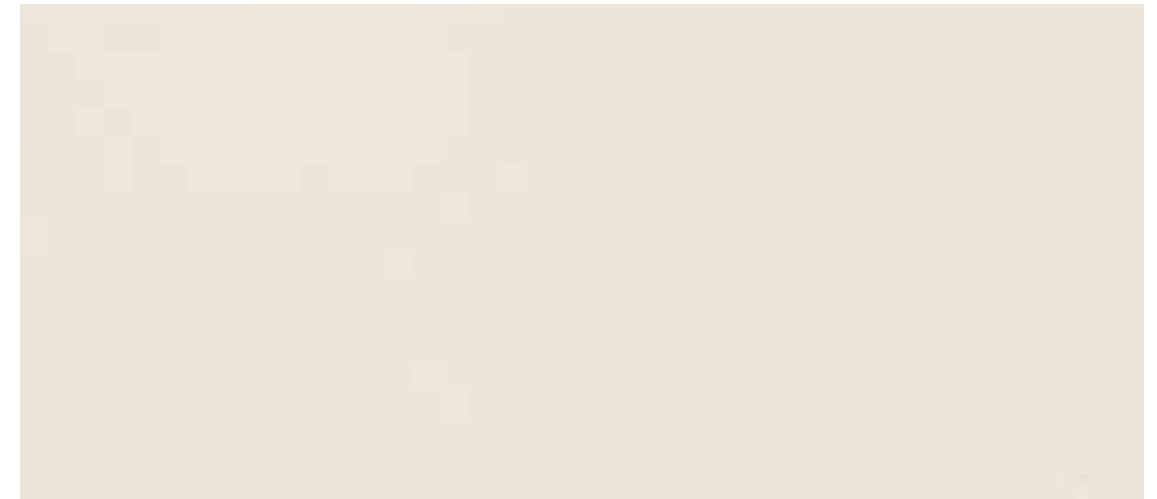
Colors of Corian®

Colors of Zodiac®

My Favorites/Cart



COUNTERTOPS:
CORIAN
TUMBLEWEED
HONED FINISH



KITCHEN TILE:
DAL TILE
MODERN DIMENSIONS
4" X 8"
BISCUIT- SEMI-GLOSS

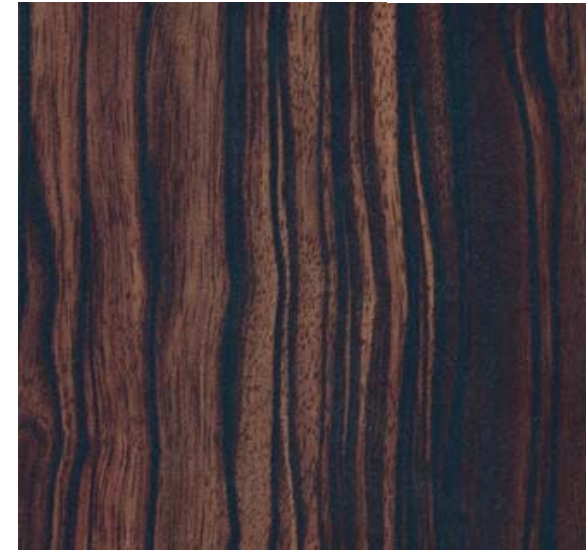
FINISH SPECIFICATIONS

NOTE: DRAWINGS AND SPECIFICATIONS ARE TO BE VIEWED AS DESIGN INTENT ONLY AND MAY NEED TO BE ALTERED DURING CONSTRUCTION DOCUMENTATION TO MEET CODE REQUIREMENTS PER LOCAL JURISDICTIONS. DRAWINGS MAY NOT BE TO SCALE AND ARE NOT INTENDED FOR CONSTRUCTION.



PORCELAIN WOOD FLOOR:
MANUF: KEOPE
TYPE: ECHOS
COLOR: WENGE
PLANKS: 6"

7962 Premier Ebony

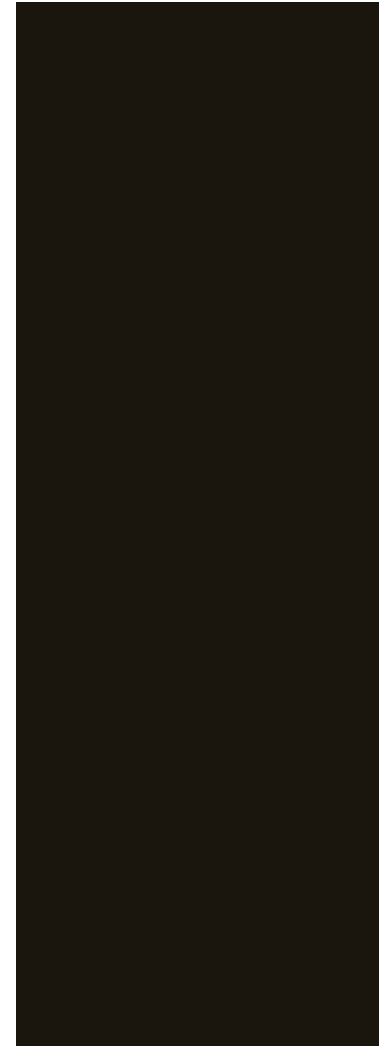


LAMINATE:
LAMINART
PREMIER EBONY
7962-VT

NOTE: DRAWINGS AND SPECIFICATIONS ARE TO BE VIEWED AS DESIGN INTENT ONLY AND MAY NEED TO BE ALTERED DURING CONSTRUCTION DOCUMENTATION TO MEET CODE REQUIREMENTS PER LOCAL JURISDICTIONS. DRAWINGS MAY NOT BE TO SCALE AND ARE NOT INTENDED FOR CONSTRUCTION.



BASE TILE:
DAL TILE
MAGMA CORE FLAT
12"X12" CUT TO FIT



**EXPOSED CEILING
PAINT:**
BENJAMIN MOORE
IRON MOUNTAIN
BM 2134-30



GEN. WALL PAINT:
BENJAMIN MOORE
HUBBARD SQUASH
SW0044

FINISH SPECIFICATIONS

NOTE: DRAWINGS AND SPECIFICATIONS ARE TO BE VIEWED AS DESIGN INTENT ONLY AND MAY NEED TO BE ALTERED DURING CONSTRUCTION DOCUMENTATION TO MEET CODE REQUIREMENTS PER LOCAL JURISDICTIONS. DRAWINGS MAY NOT BE TO SCALE AND ARE NOT INTENDED FOR CONSTRUCTION.

HOME | CONTACT | ORDER

Fencing Home

Natural Bamboo Fencing Roll

- 1 Inch Diameter
- 3/4 Inch Diameter
- 2 Inch Diameter

Mahogany Bamboo Fencing Roll

Black Bamboo Fencing Roll

Bamboo Paint

Fencing Care & Maintenance

FAQs

Residential

Commercial

How To Install

LEED

Request Quote

Photo Gallery

Installation Video

CONTACT US



TOLL FREE 1.888.788.CALI (2254)



EMAIL US

HOURS M-F 9am-6pm (PST) 9am-3pm (EST)



ENLARGE PHOTO

Request Quote

Black Gallery

Installation Video

Transform your backyard into an oasis. Black bamboo fencing roll is a popular choice for its deep, rich tones and warm color. Naturally black without dyes or coloration, black bamboo fencing offers a more contemporary and modern look. Aesthetically pleasing, durable, easy to install, and made from the strongest, most environmentally sustainable wood on Earth, Cali Bamboo® Fencing transforms yards, enhances landscapes, and adds a new dimension to the concept of what a fence can be.

Deep rich color tones

Create a contemporary and modern look

Extremely Durable and sustainable

Easy to install with very low maintenance

Sigma7™ Quality Processing System



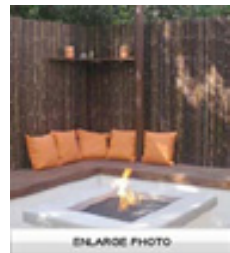
ENLARGE PHOTO

8ft x 8ft Black Bamboo Fence Panel Roll

- Color:** Black
- Pole Diameter:** 1 Inch
- Panel Size:** [8 ft x 8 ft Fence Panel Diagram](#)
- Warranty:** 7 Year Residential Warranty
- Sigma7™ Processing:** Sterilization, Fire Straightening, Natural Top Cap System, Orientation optimization, Proprietary Preservation, 14 gauge galvanized internal steel wire

Call us at: 1-888-788-2254

Request Quote



ENLARGE PHOTO



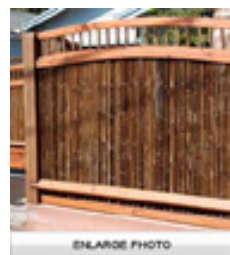
ENLARGE PHOTO

6ft x 8ft Black Bamboo Fence Panel Roll

- Color:** Black
- Pole Diameter:** 1 Inch
- Panel Size:** [6 ft x 8 ft Fence Panel Diagram](#)
- Warranty:** 7 Year Residential Warranty
- Sigma7™ Processing:** Sterilization, Fire Straightening, Natural Top Cap System, Orientation optimization, Proprietary Preservation, 14 gauge galvanized internal steel wire

Call us at: 1-888-788-2254

Request Quote



ENLARGE PHOTO

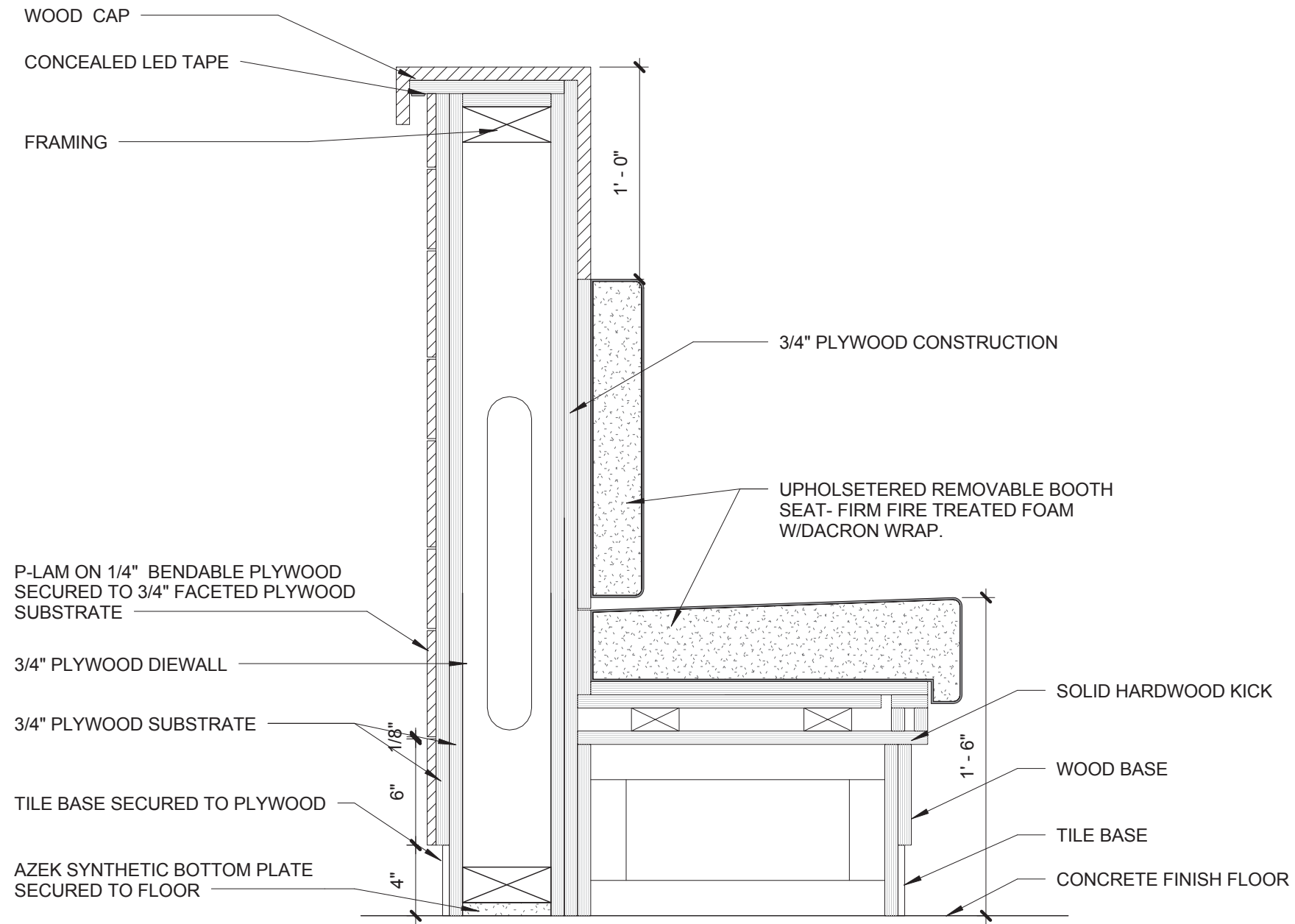
LEFT INTENTIONALLY BLANK

BAMBOO MATERIAL BEHIND RETAIL SHELVES

ARCHITECTURAL DETAILS

NOTE: DRAWINGS AND SPECIFICATIONS ARE TO BE VIEWED AS DESIGN INTENT ONLY AND MAY NEED TO BE ALTERED DURING CONSTRUCTION DOCUMENTATION TO MEET CODE REQUIREMENTS PER LOCAL JURISDICTIONS. DRAWINGS MAY NOT BE TO SCALE AND ARE NOT INTENDED FOR CONSTRUCTION.

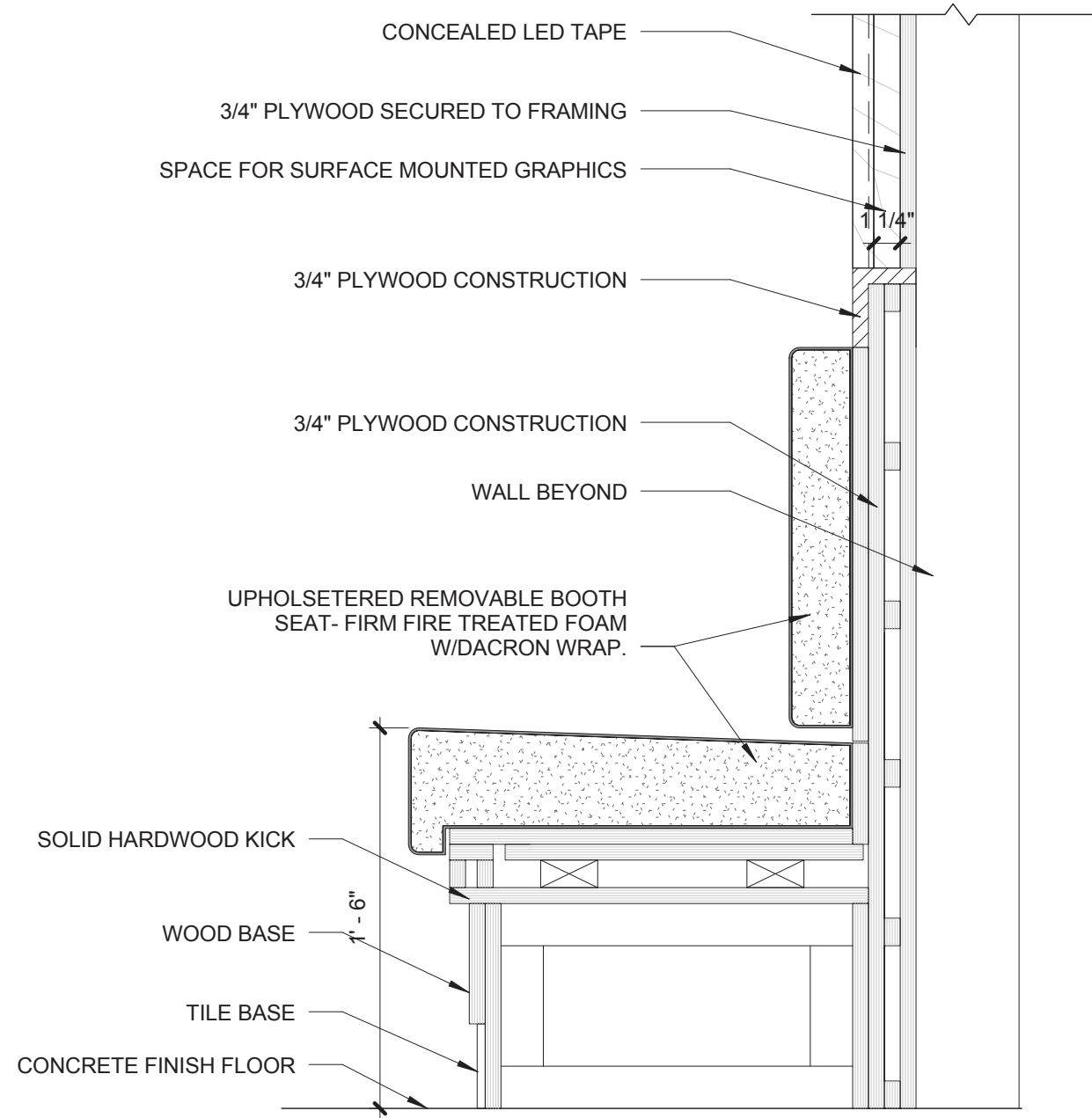
CURVED BANQUETTE AND LOW WALL



ARCHITECTURAL DETAILS

NOTE: DRAWINGS AND SPECIFICATIONS ARE TO BE VIEWED AS DESIGN INTENT ONLY AND MAY NEED TO BE ALTERED DURING CONSTRUCTION DOCUMENTATION TO MEET CODE REQUIREMENTS PER LOCAL JURISDICTIONS. DRAWINGS MAY NOT BE TO SCALE AND ARE NOT INTENDED FOR CONSTRUCTION.

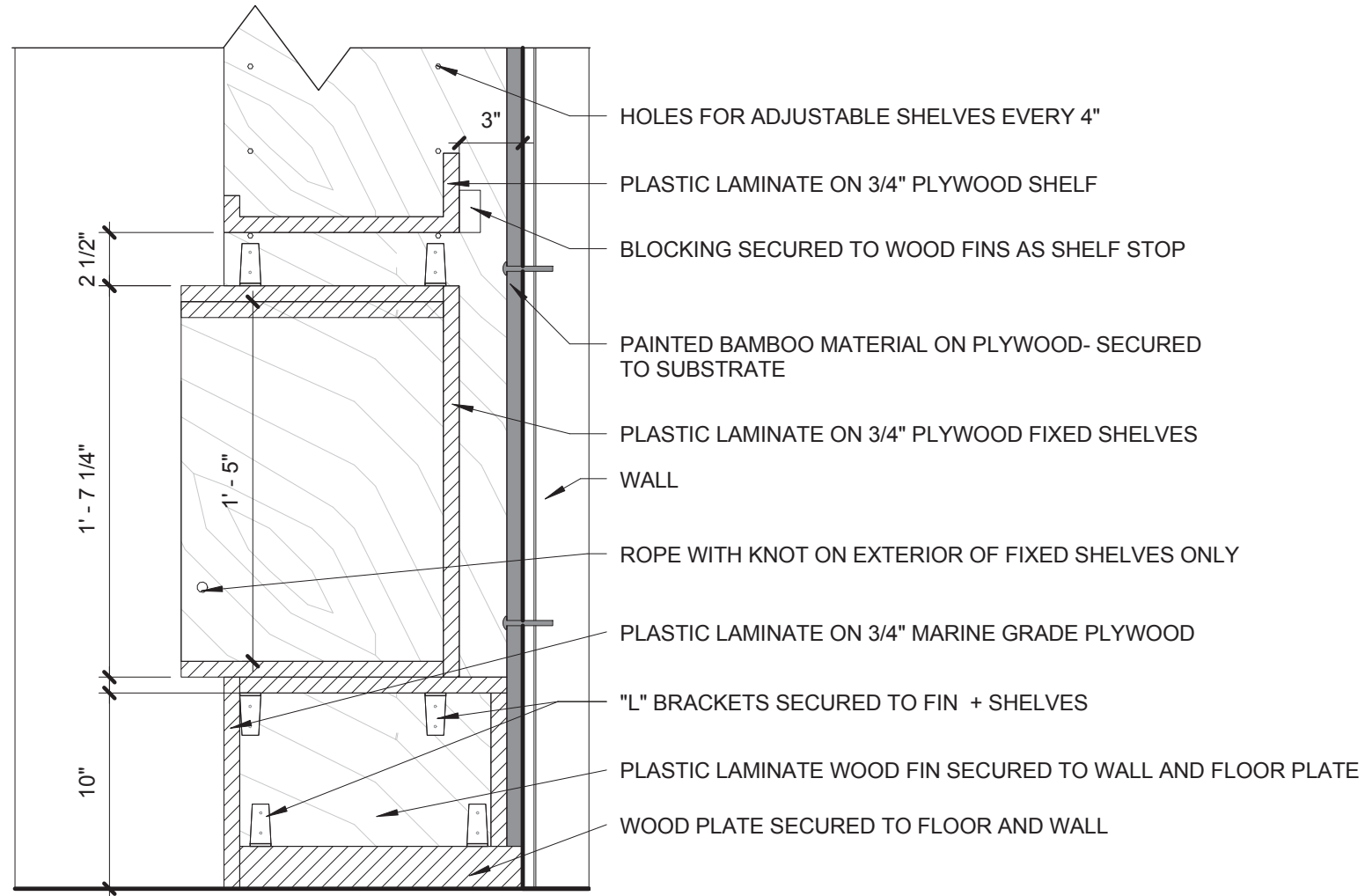
BANQUETTE AT GRAPHICS WALL



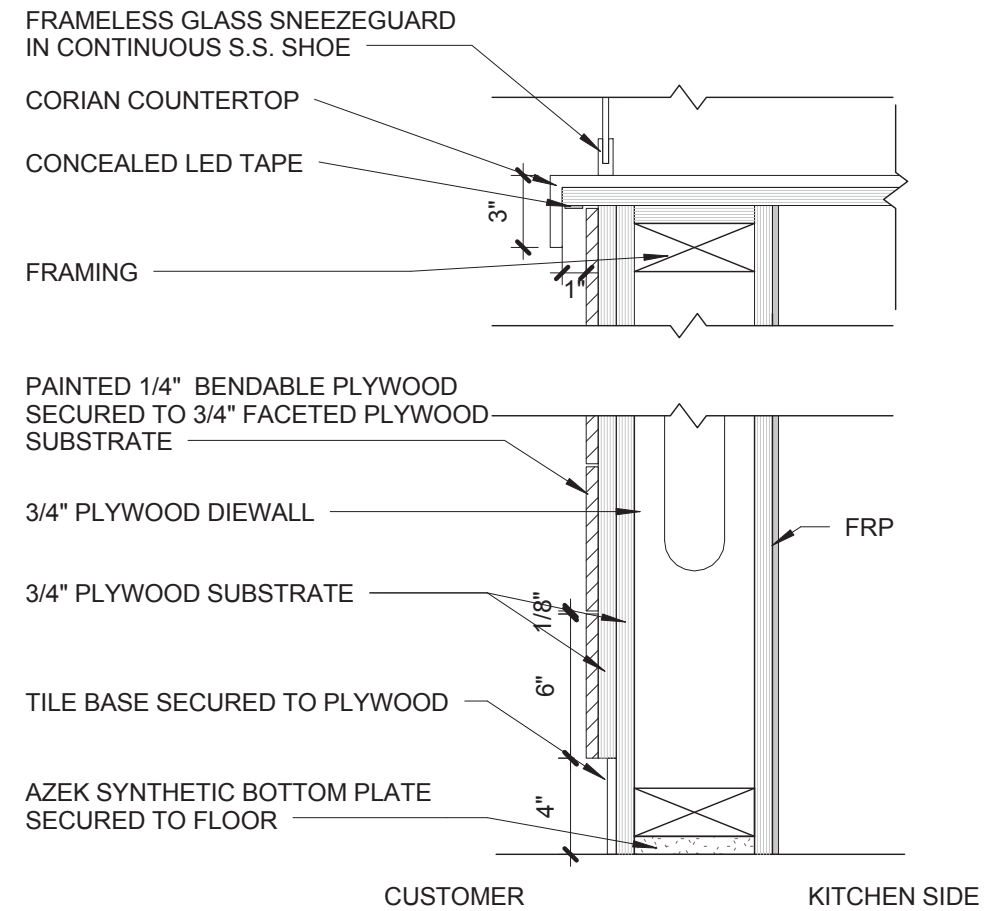
ARCHITECTURAL DETAILS

NOTE: DRAWINGS AND SPECIFICATIONS ARE TO BE VIEWED AS DESIGN INTENT ONLY AND MAY NEED TO BE ALTERED DURING CONSTRUCTION DOCUMENTATION TO MEET CODE REQUIREMENTS PER LOCAL JURISDICTIONS. DRAWINGS MAY NOT BE TO SCALE AND ARE NOT INTENDED FOR CONSTRUCTION.

RETAIL SHELVES



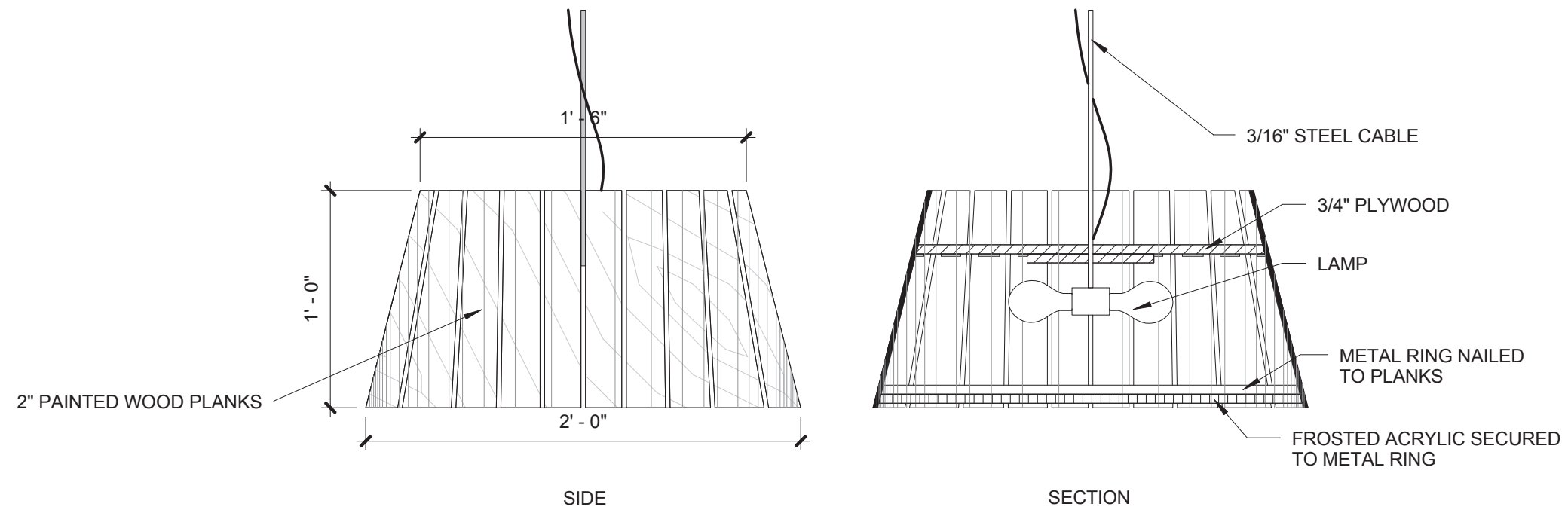
ORDER COUNTER DETAIL



ARCHITECTURAL DETAILS

NOTE: DRAWINGS AND SPECIFICATIONS ARE TO BE VIEWED AS DESIGN INTENT ONLY AND MAY NEED TO BE ALTERED DURING CONSTRUCTION DOCUMENTATION TO MEET CODE REQUIREMENTS PER LOCAL JURISDICTIONS. DRAWINGS MAY NOT BE TO SCALE AND ARE NOT INTENDED FOR CONSTRUCTION.

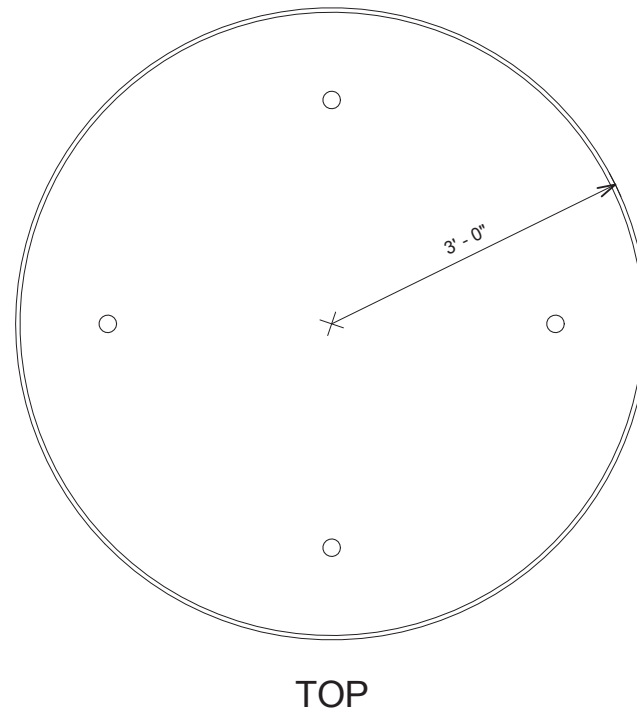
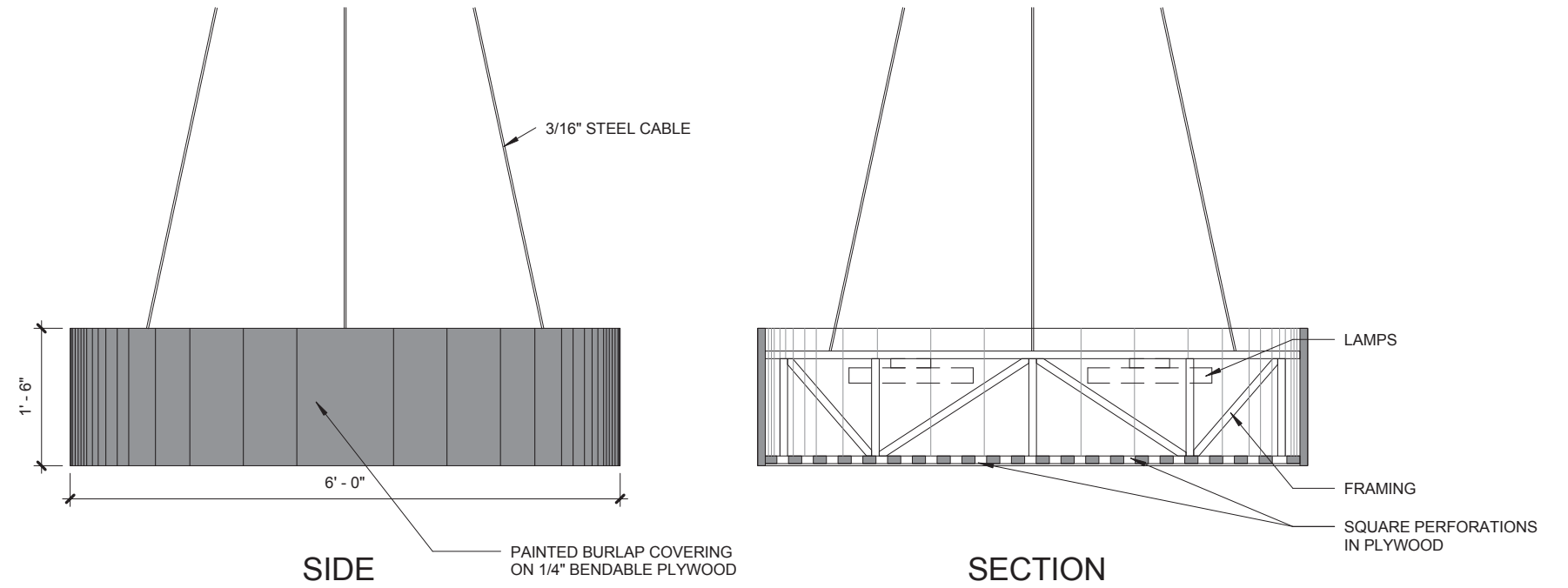
CUSTOM DINING LIGHT FIXTURE



ARCHITECTURAL DETAILS

NOTE: DRAWINGS AND SPECIFICATIONS ARE TO BE VIEWED AS DESIGN INTENT ONLY AND MAY NEED TO BE ALTERED DURING CONSTRUCTION DOCUMENTATION TO MEET CODE REQUIREMENTS PER LOCAL JURISDICTIONS. DRAWINGS MAY NOT BE TO SCALE AND ARE NOT INTENDED FOR CONSTRUCTION.

CUSTOM SIGNATURE LIGHT FIXTURE



ARCHITECTURAL DETAILS

streetsense.

4600 EAST WEST HIGHWAY
SUITE 800
BETHESDA, MD 20814

301.652.9020
WWW.STREETSENSE.COM
